



CATALOG N° 21 YEAR 2016 - 2017

SEEIT
17 Allée Des Ecureuils
63100 Clermont-Ferrand
France
Phone : 0033 4 73 31 15 15
Fax : 0033 4 27 50 17 30
contact@seeit.fr
<http://www.seeit.fr>



SUMMARY

<i>MEMORY CARDS :</i>	Page 3
Compact-Flash cards	
SD cards	
Micro-SD cards	
<i>MEMORY PROGRAMMERS :</i>	Page 4
PIC / ATMEL microcontrollers programmers	
Smartcards programmers	
EPROMs / EEPROMs / FLASHs memories programmers + EPROMs eraser	
EEPROMs i2C / FLASHs SPi memories programmers	
Universal Programmers range VeryPro / GangPro	
Universal Programmers range SuperPro	
Universal Programmers range ChipMax / TopMax / TopAll	
Adapters for programmers	
<i>ELECTROSMOGS TESTERS :</i>	Page 22
Electromagnetic fields analyzers Low Frequency	
Electromagnetic fields analyzers High Frequency	
Electrosmog multi-fields strenght meters and radiation meters	
<i>NETWORKS TESTERS (CABLES & FIBERS) :</i>	Page 25
Optics fibers devices testers	
Cables testers - passives networks	
Tone and probes to find cables	
<i>CABLES / LOGICS ANALYZERS / PRINTED PCB BOARDS :</i>	Page 29
Isolations cables and screening fleece	
Logics analyzers stand-alone or on PC	
Mylars papers PNP-BLUE	

Programmables memories EPROMs / EEPROMs / FLASHs

AMD	AMD	ATMEL	ST-MICROELECTRONICS	FAIRCHILD/NATIONAL
AM29F010B	AM27C64	AT28C16	M2716	NMC27C16B
AM29F040B	AM27C128	AT28C64B	M2732A	NMC27C32B
AM29F200BB	AM27C128	AT28C256	M27C64A	NM27C64
AM29F200BT	AM27C256		M27C128A	NM27C128
AM29F400BB	AM27C512	AT29C512	M27C256B	NM27C256
AM29F400BT	AM27C010	AT29C010A	M27C512	NM27C512
AM29F800BB	AM27C020		M27C1001	
AM29F800BT	AM27C040		M27C2001	
			M27C4001	
			M27C801	
			M28F512	

See our price list for more informations.



Memory cards

Introduction:

Specialized in high capacity high performance datastorage and communication media.

Those memory cards are designed for wide range of applications. Compatible devices include cell-phone, MP3 players, MP4 players, digital cameras, smartphone, tablet, GPS, Electronic books,....

Excellent for High Definition videos RAW+JPEG.

Those cards can be used also with motherboard to store data programs and card can be used for any others applications.

Compact-Flash cards. Capacity : 512MB / 1GB / 16GB / 32GB / 64GB / 128GB

Features:

CF-512MB	Speed : 120x	CF-16GB	Speed : 266x	CF-32GB	Speed : 800x
CF-1GB	Read speed : 15 Mb/s		Read speed : 48Mb/s	CF-64GB	Read speed : 85Mb/s.
	Write speed : 10 Mb/s		Write speed : 12Mb/s	CF-128GB	Write speed : 45Mb/s
	Conception : industrial quality.		Conception : DSLR professionnall.		Conception : DSLR professionnall.
	Technology : SLC NAND Flash, Type I.		Technology : MLC Flash multi channel. Type I.		Technology : UDMA Mode 6. Type I.

Supply voltage : 3,3V / 5,0V

Operating current at 5,0V : 0,2mA (Sleep mode), 15mA (Stand by mode), 65mA (Operating mode).

Operating current at 3,3V : 0,2mA (Sleep mode), 8mA (Stand by mode), 40mA (Operating mode).

Durability : 10.000 insertion/removal cycles.

Operating temperature : 0°C to +70°C.

Storage temperature : -40°C to +85°C.

Dimensions : 42,8 x 36,4 x 3,3mm



Compact-Flash
CF-512MB



Compact-Flash
CF-1GB



Compact-Flash
CF-16GB



Compact-Flash
CF-32GB



Compact-Flash
CF-64GB



Compact-Flash
CF-128GB

SDHC and SDXC cards. Capacity : 16GB / 32GB / 64GB / 128GB

Features:

Type : SDHC -> Compatible with SD cards reader/writer.

Type : SDXC -> Compatible with SD cards reader/writer mentioned SDXC.

Speed class : UHS-1 & C10

Compatibility with USB2.0 and USB3.0

Read speed USB2.0 : 20 Mb/s

Write speed USB2.0 : 15 Mb/s

Read speed USB3.0 : 55 Mb/s

Write speed USB3.0 : 20 Mb/s

Supply voltage : 2,7V à 3,6V

Durability : 10.000 insertion/removal cycles.

Operating temperature : 0°C to +70°C.

Storage temperature : -40°C to +85°C.

Dimensions : 32,0 x 24,0 x 2,1mm



SD card
SDHC-UHS1-16GB



SD card
SDHC-UHS1-32GB



SD card
SDXC-UHS1-64GB



SD card
SDXC-UHS1-128GB

Micro-SDHC and Micro-SDXC cards. Capacity : 16GB / 32GB / 64GB

Features:

Type : micro SDHC -> Compatible with SD cards reader/writer.

Type : micro SDXC -> Compatible with SD cards reader/writer mentioned SDXC.

Speed : UHS-1 & C10

Compatibility with USB2.0 and USB3.0

Read speed USB2.0 : 20 Mb/s

Write speed USB2.0 : 8 Mb/s

Read speed USB3.0 : 50 Mb/s

Write speed USB 3.0 : 10 Mb/s

Supply voltage : 2,7V à 3,6V

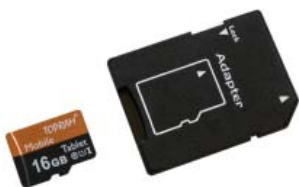
Durability : 10.000 insertion/removal cycles.

Operating temperature : 0°C to +70°C.

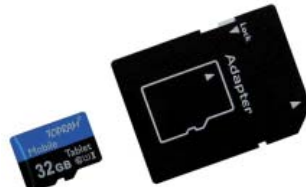
Storage temperature : -40°C to +85°C.

Dimensions : 15,0 x 11,0 x 1,0mm

Provided with SD/SDXC card adapter.



Micro-SD card
M-SDHC-UHS1-16GB



Micro-SD card
M-SDHC-UHS1-32GB



Micro-SD card
M-SDXC-UHS1-64GB

PIC microcontrollers and serial EEPROMs programmers

PIC-01

Programmer for Microchip PIC microcontrollers PIC12Cxxx / PIC12Fxxx/PIC16Cxxx/PIC16Fxxx/PIC18Fxxx and EEPROMs 24Cxxx on serial port

Introduction :

The PIC-01 allows you to program over 150 different PIC microcontrollers from Microchip. (PIC12Cxx, PIC12Fxxx, PIC16Cxxx, PIC16Fxxx and PIC18Fxxx family), as well as serial EEPROMs, (24Cxx family). Provided with 5 tulip sockets, it supports devices in DIP packages of 8, 18, 28 and 40 pins. It is equipped with a genuine RS232 interface which permits connecting it to the serial port (supplied cable) of any compatible PC. It permits to read, write, erase, test and edit PROGRAM, EEPROM and registry of each microcontroller. It works with IcProg, PonyProg et WinPic800 software under Windows 98/XP/VISTA/Windows7/Windows8/Windows10 (32/64bits). Require a continuous power pack of no regulated 12Vdc / 300mA or regulated 16Vdc / 300mA.

Devices supported list :

Support over 150 different PIC microcontrollers
PIC10Fxxx / PIC12Cxxx / PIC12Fxxx / PIC16Cxxx / PIC16Fxxx / PIC18Fxxx / 24Cxx
Read the datasheet of the programmer to see the full device list.

Item includes :

- Programmer with several tulip DIP package..
- A serial extension lead SUBD9M - SUBD9F.
- 3 softwares on CD-ROM, (IcProg, PonyProg, WinPic800).
- User manual in English, French, German, Dutch.



PIC-01
programmer

PIC-02

Programmer for Microchip microcontrollers PIC16C54 / PIC16C5x on parallel port

Introduction :

The PIC-02 enables the user to program microcontrollers of the PIC16C54 serie, PIC16C5x is not supported by the PIC-01. The circuit is provided with 18 and 28-pin tulip sockets allowing you to program different devices. It connects to the parallel port (supplied cable) of your PC and operates with the PP5X software under DOS/Win98 or also with ICprog under Windows 95/98/ME/XP/VISTA/Win7 (32bits). Require a continuous power pack of no regulated 12Vdc / 300mA or regulated 16Vdc / 300mA.

Devices supported list :

Components supported by ICprog (WinXP) :
PIC16C54 PIC16C56 PIC16C58

Components supported by PP5X (Win98) :
PIC16C54 PIC16C55 PIC16C56 PIC16C57

Items includes :

- Programmer with tulips DIP package.
- A parallel extension lead SUBD25M - SUBD25F.
- Software on CD-ROM.
- User manual in English and French.



PIC-02
programmer

MULTIPIC

Universal programmer for Microchip PIC microcontrollers 10Fxxx / 12Fxxx / 16Fxxx / 18Fxxx / 24Fxxx / dsPic30F / dsPic33Fxxx and serial EEPROMs 24LCxx / 25LCxx / 93LCxx on USB port

Introduction :

The MULTIPIC allows you to program over 650 different PIC microcontrollers from Microchip (PIC10Fxxx, PIC12Fxxx, PIC16Fxxx, PIC18Fxxx, PIC24Fxxx, PIC24Hxxx, dsPIC30Fxxx, PIC32MXxxx and dsPIC33Fxxx) thanks to its different tulip sockets for all components in DIP 8, 14, 18, 20, 28 et 40 pins and its SPI connector to program on-board components or for adding optional adapters in SOT, DFN, SOIC, SSOP, QFN, TQFP package. Also this programmer allows you to program serial EEPROMs 24C/LC/AA/FCxxx, 25LC/AAxxx, 93C/LC/AAxxx and HCSxxx components. The MULTIPIC connects to the USB port of your PC and does not require any external power supply. The software of MULTIPIC works under Windows XP/VISTA/Win7/Win8/Win10 (32 and 64bit) and with MPLABX-IDE (32/64 bits) under Windows and Linux.

Devices supported list :

Support over 650 different PIC microcontrollers.
PIC10Fxxx / PIC12Fxxx / PIC16Fxxx / PIC18Fxxx / PIC18FxxJxx / PIC18FxxKxx
PIC24Fxxx / PIC24FJxxx / PIC24HJxxx / dsPIC30Fxxx / PIC32MXxxx / dsPIC33FJxxx
HCSxxx / MCP250xxx
11LCxx / 11AAxx / 24LCxx / 24AAxx / 24FCxx / 25LCxx / 25AAxx / 93LCxx / 93AAxx / 93Cxx
Read the datasheet of the programmer to see the full device list.

Items includes :

- Programmer with several tulip DIP package.
- USB cable.
- Software on CD.
- User manual in English and French.



MultiPic
programmer

LEAPER-5E

Programmer for 80C51 / 87C51 / 89C51 type microcontrollers on USB

Introduction :

The LEAPER-5E is the perfect tool to program 8 bit microcontrollers of the 80C51 / 80C52 family. It is provided with a ZIF40 socket allowing you to program AT89xx, GMS97xx, 87Cxx, IS89xx, P89xx, SST89, TSC87xx, W77xx, and W78xx. Its software supports Bin, Intel Hex, Motorola Hex and Tektronic file formats. It connects to the USB port of any compatible PC under Windows 98SE/ME/2000/XP/Win7 (32bits).

Item includes : - A programmer. - A power pack 230VAC/12Vdc. - A USB cable A-B type. - CD-ROM.



LEAPER-5E
programmer

PSTART

Universal programmer for Microchip PIC microcontrollers on serial port

Introduction :

The PSTART is a development tool designed to program Microchip PIC microcontrollers. Provided with a ZIF40 socket, it can program the whole serie of PIC 10Fxx, 12Cxxx, 12Fxxx, 16Cxxx, 16Fxxx, 17Cxxx, 18Cxxx, 18Fxxx and rPIC12Cxxx. It is delivered with Microchip CD-ROMs holding MPLABX-IDE software to program devices, and MPASM to compile source programs. This software works with Windows 98/NT/2000/ME/XP/VISTA/Win7/Win8/Win10/Linux (32/64bits). The CD-ROM also holds technical information about the supported devices. The programmer plugs into the serial port of any compatible PC and is identical to the PICSTART+ programmer from Microchip.

Devices supported list :

Support over 240 different components.

PIC12Cxxx / rPIC12Cxxx / PIC16Cxxx / PIC16HVxxx / PIC17Cxxx / PIC18Cxxx
PIC10Fxxx / PIC12Fxxx / PIC16Fxxx / PIC18Fxxx

Read the datasheet of the programmer to see the full device list.

Items includes :

- Programmer with ZIF40 socket.
- A wall transformer 9Vdc/100Vac - 240Vac - 1A.
- A serial extension lead SUBD9M - USB.
- Software on CD-ROM, (in several languages).
- User manual in English and French.



PSTART
programmer

PRESTO

Universal SPI programmer for serial EEPROMs / SPI FLASHs serial and Microchip PIC, Atmel AVR, Texas MSP microcontrollers

Introduction :

This programmer enables the in-situ programming of PIC microcontrollers, ATMEL microcontrollers and serial EEPROMs, thanks to its JTAG/SPI interface. It permits you to directly program the devices soldered on printed circuits or devices in special packages without having to add an adapter. The PRESTO plugs in the USB port of your PC and can be connected directly to the devices with the help of 7 wires. PRESTO does not require external power supply. It works with any system equipped with Windows 98SE/ME/2000/XP/VISTA/Win7/Win8/Win10 (32-64 bits) and Linux(32-64bits).

Device supported list :

Support over 2000 differents components. See the datasheet of the product to have the full device list.

MICROCHIP : PIC10Fxxx
PIC12Fxxx / PIC12Cxxx / rPIC12
PIC16Fxxx / PIC16Cxxx
PIC18Fxxx
PIC24Fxxx / PIC24FJxxx / PIC24FVxxx / PIC24HJxxx
PIC32MXxxx / dsPIC30Fxxx / dsPIC33FJxxx
AT90CANxxx / AT90PWxxx / AT90Sxxx / AT90USBxxx
ATmegaxxx / ATtinyxxx / ATxmegaxxx
AT32UCxxx
AT89LPxxx / AT89LSxxx / AT89Sxxx
TEXAS : MSP430F1xxx / MSP430F2xxx / MSP430F4xxx / MSP430F5xxx
MSP430FExxx / MSP430FGxxx / MSP430FWxxx / MSP430G
CC430Fxxx / CCxxx
CHIPCON : CY8Cxxx
CYPRESS : 24AAxx / 24Cxx / 24FCxxx / 24LCxxx
I2C EEPROM : 25AAxx / 25LCxxx / AT25xxx / M95xxx
SPI EEPROM : AT25DFxxx / AT25Fxxx / AT26DFxxx / AT45DBxxx / M25Pxxx
SPI FLASH EPROM : MX25Lxxx / PM25LVxxx / S25FLxxx / SST25Vxxx / W25Qxxx
MicroWire EEPROM : 93AAxx / 93Cxx / 93LCxx / M93Sxx

Items includes :

- Programmer
- SPI cable.
- USB cable.
- Software on CD.
- User manual in English and French.

Optional adapters :

HPR3V3 : 3,3V level shifter for PRESTO
HPR1V2 : 1,2V to 3,3V level shifter for PRESTO
HPRAVR : PRESTO to AVR Atmel connector adapter.
ISP2ZIF : Universal adapter SPI to ZIF40 socket to program microcontrollers.



PRESTO
programmer



Adapter
HPR1V2

Adapter
HPR3V3



Adapter
HPRAVR

ISP2ZIF

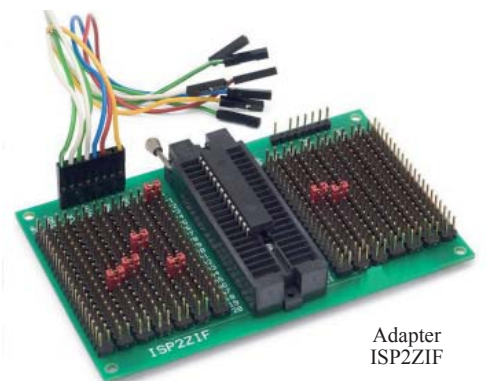
Universal SPI adapter with ZIF40 socket to program PIC and AVR in DIP package, 8 to 40 pins.

Introduction :

ISP2ZIF is an adapter for programming all types of devices with In-Circuit Serial/In-System Programming (ICSP/ISP), especially with the PRESTO programmer. The adapter is provided with the 40-pin Zero Insertion Force socket (ZIF) which accepts 300 to 600 mils wide devices. ISP2ZIF works well for most of programmable devices as Microchip PIC® and Atmel AVR and AT89S (*51 architecture) microcontrollers in DIP packages up to 40 pins. The user can connect any device pin to any of 7 programming signals (VPP/13V, VDD, GND, DATA/MOSI, CLOCK, MISO, LVP).

Item includes :

- PC board with ZIF40 socket.
- User manual in English and French.



Adapter
ISP2ZIF

Smartcard programmers

CAR-05

Universal smartcard programmer/reader on parallel port for PIC / AVR / EEPROM / PHONECARD-T2G

Introduction :

The CAR-05 is a universal smartcard programmer on parallel port which accepts PIC based smartcards (Goldcards, Silvercards 2 to 4), AVR based smartcards (Funcards 2 to 7), serial EEPROM based smartcards (I2C, D2000...) and T2G telecards. The environment of Smartchip professional programming delivered with this programmer enables an easy programming of the different types of supported cards. It is equipped with a full screen editor which displays separately the contents of Flash memory, internal EEPROMs and external EEPROMs. Also it is possible to edit the processor configuration registers (fuses). The microprocessor type as well as the external EEPROM size are automatically detected. Works on parallel port under Windows 98/ME/2000/XP/VISTA/Win7 (32bits).

Item includes :

- Programmer with ISO7816 socket high quality ITT-CANNON.
- A parallel extension lead SUBD25M - SUBD25F.
- Software on CD-ROM, (in several languages).
- User manual in English and French.

Device list supported by programmer CAR-05 and Smartchip V1.40 software :

ATMEL :	PHONE CARDS :
- Funcard-2 (AT90S8515 + AT24C64)	- Télécarte T2G (ST1333)
- Funcard-3 (AT90S8515 + AT24C128)	
- Funcard-4 (AT90S8515 + AT24C256)	PHILIPS :
- Funcard-5 (AT90S8515 + AT24C512)	- D2000 (PCF8592C-2)
- Funcard-6 (AT90S8515 + AT24C1024)	- D4000 (PCF8594C-2)
- Funcard-7 (AT90S8515 + 2xAT24C1024)	- D8000 (PCF8598C-2)
MICROCHIP :	EEPROMS I2C :
- Goldcard (PIC16F84A + 24LC16B)	- ZCM02A (ST14C02C)
- Silvercard-2 (16F876/16F877 + 24LC64)	- ZCM16M (24LC16B)
- Silvercard-3 (16F876/16F877 + 24LC128)	- ZCM32M (24LC32)
- Silvercard-4 (16F876/16F877 + 24LC256)	- ZCM64M (24LC65)
	- ZCM128M (24LC128)
GEMPLUS :	- ZCM256M (24LC256)
- GPM896 (Carte sécurisée)	- ZCM512M (24LC512)



CAR-05
programmer

CAR-06

Smartcard programmer for PIC MICROCHIP and AVR ATMEL on USB port

Introduction :

The CAR-06 is a programmer supporting all types of PIC and Atmel based smartcards (Goldcards, Silvercards 2 to 4, Jupitercards, Funcards 2 to 7, ATmegacards, etc...). It connects to the USB port of your PC and does not require any external power supply. Equipped with a RISC processor with a clock speed of 24MHz, it offers high-speed programming in one pass. The supplied software allows to auto-detect the used smartcard as well as to edit the processor registers of the smartcards. It operates with Windows 98/ME/2000/XP/VISTA/Win7 (32bits).

Item includes :

- Programmer with ISO7816 socket high quality ITT-CANNON.
- A n USB cable (A-B type).
- Software on CD-ROM, (in several languages).
- User manual in English and French.

Device list supported by programmer CAR-06 :

- Wafercard (16C84, 16F84, 16F84A)	- Funcard ATmega161 (ATmega161 + 24C64)
- Goldcard (16F84/16F84A + 24C16)	- Funcard ATmega163 (ATmega163 + 24C256)
- Silvercard (16F876/16F877 + 24C64)	- BlackCard (ATmega128 + 24C256)
- Greencard (16F876/16F877 + 24C128)	- Funcard ATmega8515 (ATmega8515 + 24C256)
- Greencard2 (16F876/16F877+24C256)	- Funcard/Funcard2 (AT90S8515 + 24C64)
- Bluecard (16F84A + 24C64)	- Funcard3/Prussiancard (AT90S8515 + 24C128)
- Emeraldcard (16F628 + 24C64)	- Funcard4/Prussiancard2 (AT90S8515 + 24C256)
- Canarycard (16F628 + 24C16)	- Funcard5/Prussiancard3 (AT90S8515 + 24C512)
- Singlepic (16F876, 16F627, 16F628).	- Funcard6/Prussiancard4 (AT90S8515 + 24C1024)
- Jupitercard (AT90S2343 + 24C16)	- Funcard7/Prussiancard5 (AT90S8515 + 2 x 24C1024)
- Jupitercard2 (AT90S8535 + 24C64)	- Dragon Loader Card (AVR) / dragon Loader Card (PIC)



CAR-06
programmer

USB CABLE

TESTER-METER-USB

LCD USB mini voltage and current detector tester meter + load resistor

Introduction :

Input Voltage: 3V - 7V.

Input current: <3.4A.

Parameters that you can test: Voltage of battery, current of battery, value of discharging capacitor.

Item includes :

- LCD tester.
- Discharge load resistor.



INFINITY-UNLIMITE

Universal and evolutional smartcard programmer on USB port

Introduction :

The Infinity-USB-Unlimited is an evolutional smartcard programmer supporting the full-speed USB 2.0 norm. It is equipped with two ISO7816 and Micro-SIM connectors allowing it to accept both smartcard formats. It also enables the user to program all of the most common PIC and ATMEL microcontroller based smartcards and high security cards such as Titanium, Platinum, Knot, OPOS, etc... Its USB interface also emulates the serial Phoenix and Smartmouse modes to program smartcards based on the Phoenix mode. The Flash microcontroller which runs this programmer can be automatically updated while the software is loading. A development kit with example programs in different languages is also delivered with the product allowing the user to develop smartcard applications by himself. Moreover, the oscillator frequency can be programmed from 0.1MHz to 100MHz including 3.58MHz and 6.00MHz frequencies. This programmer supports smartcards in 3.3V-5V and operates under Windows 98/2000/ME/XP/VISTA/Win7/Win8 /Win10 (32/64bits) and Linux.

Item includes :

- A programmer with ISO7816 and Micro-SIM socket.
- A USB cable.
- A CD-ROM with 3 softwares: smartcard programmer, mobile phone sim card, access key to a computer.
- Instructions for use in English.

Device supported list by programmers Dynamite and Infinity-Unlimite :

Device supported list on USB mode :

- Wafecard (16C84, 16F84, 16F84A)
- Goldcard (16F84/16F84A + 24C16)
- Silvercard (16F876/16F877 + 24C64)
- Greencard (16F876/16F877 + 24C128)
- Greencard2 (16F876/16F877 + 24C256)
- Bluecard (16F84A + 24C64)
- Emeraldcard (16F628 + 24C64)
- Canarycard (16F628 + 24C16)
- Singlepic (16F876, 16F627, 16F628).
- Jupitercard (AT90S2343 + 24C16)
- Jupitercard2 (AT90S8535 + 24C64)
- Funcard ATmega161 (ATmega161 + 24C64)
- Funcard ATmega163 (ATmega163 + 24C256)
- BlackCard (ATmega128 + 24C256)
- Funcard ATmega8515 (ATmega8515 + 24C256)
- Funcard/Funcard2 (AT90S8515 + 24C64)
- Funcard3/Prussiancard (AT90S8515 + 24C128)
- Funcard4/Prussiancard2 (AT90S8515 + 24C256)
- Funcard5/Prussiancard3 (AT90S8515 + 24C512)
- Funcard6/Prussiancard4 (AT90S8515 + 24C1024)
- Funcard7/Prussiancard5 (AT90S8515 + 2 x 24C1024)

Device supported list on Phoenix mode :

- Titaniumcard, Titancard-2, Platinum, Knotcard
- OPOScard, Wildcard
- M-2 card
- Basiccard 4.5D

Device supported list on Smartmouse mode :

- Simcard / GSM

Device supported list on serial port :

- (See the following softwares)
- ICprog
- Chipcat
- Cardwriter
- Dragon Card :
- Dragon Loader Card (AVR)
- Dragon Loader Card (PIC)



Infinity-Unlimite
(Pack)



Infinity-Unlimite
programmer

SMARTCARDS

GOLD

Smartcard Goldcard with microcontroller PIC16F84A and EEPROM 24LC16B

Flash memory : 1Kbyte

RAM Memory : 68 bytes

EEPROM internal : 64 bytes

EEPROM external : 24LC16B : 2Kbytes

FUN-5

Smartcard Funcard-5 with microcontroller AT90S8515 and EEPROM AT24C512

Flash memory : 8 Kbytes

RAM memory : 512 bytes

EEPROM internal : 512 bytes

EEPROM external : AT24C512 : 64Kbytes

FUN-7

Smartcard Funcard-7 with microcontroller AT90S8515 and 2 x EEPROMs AT24C1024

Flash memory : 8 Kbytes

RAM memory : 512 bytes

EEPROM internal : 512 bytes

EEPROMs external : AT24C512 : 2 x 128Kbytes

ZCM02M

Smartcard with an EEPROM type ST14C02C i2c bus (equivalent 24C02) with 256 bytes.

ZCM16M

Smartcard with EEPROM type 24LC16B i2c bus (equivalent 24C16) with 2Kbytes.

ZCM64M

Smartcard with EEPROM type 24LC64 i2c bus (equivalent 24C64) with 8Kbytes.



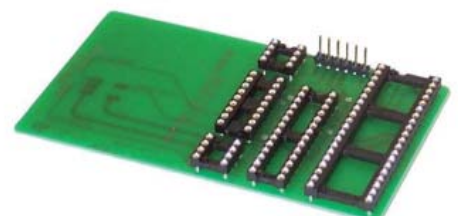
24LC64

ADD-PIC

Smartcard and SPI adapter card for PIC microcontrollers

Introduction :

The ADD-PIC adapter allows you to add DIP8, DIP14, DIP18, DIP28 and DIP40 sockets to program PIC microcontrollers with programmers lacking tulip sockets and only equipped with a SPI connector such as the PRESTO. It is also provided with a connector allowing you to insert it into a smartcard programmer such as the CAR-06 or INFINITY-UNLIMITE. It is also possible to use the ADD-PIC as a prototyping board.



EPROMs / EEPROMs / FLASHs programmers, (powered by USB port)

FLASHBIOS

E(E)PROMs/FLASHs programmer for 27C/28C/29C/28F/29F/39F/49F and for i2c EEPROMs/spi FLASHs 24Cxx/25Cxx/25Lxx/95xx

Introduction :

The FlashBios is a device reader/programmer/copier supporting C-mos Eeproms (2716 to 27C801 family) of 16Kb to 8Mb, parallel EEPROMs (28C16 to 28C040 family) up to 4Mb, parallel FLASH memory (28xxx, 29xxx, 37xxx, 39xxx, 49xxx, etc) of 512Kb to 8Mb, i2c and SPI EEPROMs/FLASHs memory (24Cxxx / 25xxx / 25Cxxx / 25Lxxx / 95xxx) until 16Mb. It is equipped with a LED indicating the different status of the programmer, a USB port, a high quality tulip socket supporting devices in DIP packages of 8, 24, 28 or 32 pins and a PLCC32 socket supporting any 32-pin FLASH memory. The FlashBios connects to the USB port of any compatible PC and does not require any external power supply which makes it very practical to use at the office or on a business trip. Its integrated supply runs all the devices requiring a supply of 2.5V / 3.3V / 5.0V / 12.0V / 12.5V / 13V / 21V and 25V. The software works with Windows 98/ME/2000/XP/VISTA/Windows7/Windows8/Windows10 (32bit and 64 bit).

Device supported list :

Read the datasheet of the programmer to see the full device list.

Item includes :

- Programmer with tulip 8DIP and 32DIP package, 32PLCC.
- USB cable. - Software on CD. - User manual in English and French.



FlashBios programmer

FLASHBIOSBOX

E(E)PROMs/FLASHs universal memories programmer in box with ZIF32 socket, PLCC32 socket and SPI connector

Introduction :

The FlashBiosBox is a device reader/programmer/copier supporting Eeproms (2716 to 27C801 family) of 16Kb to 8Mb, parallel EEPROMs (28C16 to 28C040 family) up to 4Mb, parallel FLASH memory (28xxx, 29xxx, 37xxx, 39xxx, 49xxx, etc) of 512Kb to 8Mb, i2c and SPI EEPROMs memory (24Cxxx / 25xxx / 25Cxxx / 25Lxxx / 95xxx) until 16Mb. It is equipped with a LED indicating the different status of the programmer, a USB port, a high quality ZIF32 socket supporting devices in DIP packages of 8, 24, 28 or 32 pins and a PLCC32 socket supporting any 32-pin FLASH memory. The FlashBiosBox connects to the USB port of any compatible PC and does not require any external power supply which makes it very practical to use at the office or on a business trip. Its integrated supply runs all the devices requiring a supply of 2.5V / 3.3V / 5.0V / 12.0V / 12.5V / 13V / 21V and 25V. The software works with Windows 98/ME/2000/XP/VISTA/Windows7/Windows8/Windows10 (32bit and 64 bit).

Device supported list :

Read the datasheet of the programmer to see the full device list.

Item includes :

- Programmer with ZIF32 socket, 32PLCC support and SPI connector.
- USB cable.
- Software on CD.
- User manual in English and French.



FlashBiosBox programmer

LEAPER-56

Universal pocket size programmer with ZIF48 socket for E(E)PROM/FLASH/PLD/MCU on USB port, without external power pack

Introduction :

Phone size. The programming efficiency is much better than the other programmers on the market in any time and any condition. By letting your PC or laptop connect with LEAPER-56, it will perform your outstanding ability of development and debugging. You can easily have professional factory-level productivity. Portable mini size. Without socket, only 136mm(L)* 90mm(W)* 20mm(H). You just need to connect with USB cable to use. No additional power supply. Provides with DUT 75MHz bandwidth and < ±2.5nS signal skew. In addition to the high processing speed, you can verify whether the ICs processing frequency meets the specifications. Via USB HUB, you can connect multiple LEAPER-56s to do gang programming. It makes development and mass production proficient. Provide with DUT device pin checking and memory components ID verification. Ensure the best yield rate of processing.

Device supported list :

Consult the datasheet of this product to see the full device list.

Item includes :

- Main unit. - Y-USB cable. - CD (Included driver and user's manual). - Soft case.



LEAPER-56 programmer

LER-121A

Metalic boxed EPROMs eraser with timer

Introduction:

The LER-121A allows you to erase up to 12 Eeproms simultaneously. It is equipped with an adjustable timer from 0 to 60 minutes, a LED indicator for tube status (on/off), an electronic starter for a better longevity of the U-V tube, as well as a circuit breaker to prevent from U-V exposure if the case opens accidentally.

Features:

U.V. tube, wavelenght : 253,7nm, power : 4W.
The timer can be set from 0 to 60 minutes.
Drawer to place the EPROMs on antistatic rubber.
Protect users from UV exposure by equipped with auto UV shut off switch when opening the device drawer.
LED on the top panel to indicate the status of UV tube.
Dimension : 24 x 8,5 x 9,5 cm. Weight : 1,2Kg
Erase time : between 10mn and 20mn.
Erase up to 12 EPROMs simultaneously (24 pins) or 7 EPROMs simultaneously (28/32 pins).

Item includes:

- An eraser in its metallic housing. (With drawer, ajustable timer, U.V. tube 4W)
- A DC power adaptor 9V/500mA.
- User manual in English and French.



LER-121A eraser

EEPROMs I2C and FLASHs SPI programmers

FLASHPRO

EEPROMs 24C/25C/93Cxxx and SPI FLASHs 25xxxx programmer on USB port, ZIF16 socket

Introduction :

FLASHPRO is a serial components programmer. It can support standards EEPROMs i2C bus as 24C01 to 24C4096, (24AAxx/24Cxx/24FCxx/24LCxx/24WCxx family), as well as standards SPI FLASHs SPI, from 8Mbytes to 128Mbytes (25Dxx/25DFxx/25Fxx/25FLxx/25Lxx/25LVxx/25Pxx/25Qxx/25VFxx/25Xxx family). The software, easy to use, allows to read, erase, write, verify the BIOS computer memory, TV or DVD EEPROMs, routers, etc... The FlashPro connects to the USB port of any compatible PC and does not require any external power supply. You can select the power supply of the component (3,3V / 5,0V) by a switch. Support for Windows XP / VISTA / 7 / 8 / 10 (32/64 bits).

Device supported list : Read the datasheet of the programmer to see the full device list.

Item includes :

- Programmer.
- USB cable.
- Software on CD-ROM.
- User manual in English and French.



FLASHPRO programmer

SKYPRO

Programmer/copier for i2C EEPROMs 24/25/93xx, SPI FLASHs 25/26xx, HCS microchip, MCU Atmel, DataFlash, on USB port, ZIF16 socket

Introduction :

SKYPRO supports more than 700 components among EEPROMs 24xxx/25xxx/93xxx and SPI FLASHs 25xxx/26xxx from several manufacturers. It can also program ATMEL ATmega microcontrollers, Data Flash AT45DBxxx and HCS rolling code. Bases on ARM Cortex CPU32 and connected to an USB port, the programming speed is very fast. It can operate in stand-alone mode to copy directly a memory on another one by inserting the two components on the ZIF16 socket, (off line chip copy). This programmer does not require any external power supply because it is powered by the USB port. The software allows to read, erase, copy, write, verify components. It has a mass production mode and auto detect chip mode for SPI FLASHs 25xxx serie. Support for Windows XP / VISTA / 7 / 8 / 10 (32 and 64 bits).

Device supported list : Read the datasheet of the programmer to see the full device list.

Item includes :

- Programmer with ZIF16 socket.
- USB cable type A-B
- PCB socket for SMD chips.
- AVR ISP cable + AVR ISP adapter.
- User manual in English and French.
- Software on CD-ROM.



SKYPRO programmer

FLYPRO-SP8B

Universal programmer/copier for serial EEPROMs, serial SPI FLASH, DataFlash, on USB port, ZIF40 socket + ICSP cable

Introduction :

FLYPRO-SP8-B supports more than 7.000 Serial EEPROMs and Serial FLASHs. Its library contains most of i2C EEPROMS memory and most of ISP FLASHs memory. It supports also DataFlash memory. Thanks to it USB port, this programmer does not require any external power supply. It has also a mass production mode. It is possible to program the components on its ZIF40 socket or through it HE10 connector and with the ICSP cable provided. This programmer is very practical to use with a laptop computer at the office or on a business trip. Support for Windows XP / VISTA / 7 / 8 / 10 (32 and 64 bits).

Device supported list : Read the datasheet of the programmer to see the full device list.

Item includes :

- Programmer with ZIF40 socket.
- ICSP-HE10 cable with 10 wires.
- USB cable type A-B
- Software on CD-ROM.
- User manual in English and French.



FLYPRO-SP8B programmer

MINIPRO-TL866A

Universal programmer for EPROMs, EEPROMs, SPI FLASH and Microcontrollers, on USB port, ZIF40 socket + ICSP cable

Introduction :

The MiniPro-TL866A is an universal programmer which supports more than 13.000 components. Its device list contains all the manufacturers of FLASHs memories who use SPI serial access mode, EPROMs and FLASHs EPROMs which use parallel access mode (VPP from 3,3V to 21V), standard microcontrollers manufacturers (Atmel, Intel, Microchip, NXP, Philips, SST, Synmos et Winbond), PLD/GAL from Lattice, as well as SRAM/DRAM test. Its program components are the fastest than others programmers because it supports Fast SPI algorithm mode. Thanks to its USB port, this programmer does not require any external power supply. It is also protected against shorts and overvoltage. It is possible to program the components on it ZIF40 socket or through it HE10 connector and with the ICSP cable provided. This programmer is very practical to use with a laptop computer at the office, on a business trip, or for automotive application. Support for Windows XP / VISTA / 7 / 8 / 10 (32 and 64 bits).

Device supported list : Read the datasheet of the programmer to see the full device list.

Item includes :

- Programmer with ZIF40 socket.
- USB cable type A-B
- ICSP cable with 6 wires.
- Software on CD-ROM.
- User manual in English and French.



MiniPro-TL866A programmer



Universal programmers range VeryPro

VERYPRO-ISP10

Universal ISP programmer for serial EEPROMs 24Cxx/93Cxx on USB2.0 port

Introduction :

VeryPro-ISP10 is an universal programmer for serial EEPROM with 10 wires SPI connector. It permits you to directly program the devices soldered on printed circuits or devices in special packages without having to add an adapter. It supports over 2.700 serial EEPROMs from 55 different manufacturers. It accepts components in 5.0V and 3.3V low-voltage. It does not require any external power supply and the software works with Windows XP/VISTA/Windows7/Windows8/Windows10 (32bit and 64 bit).

Device supported list :

Program more than 2.700 different components. Consult the datasheet of this product to see the full device list.

Item includes :

- Programmer.
- SPI cable with 10 wires.
- USB cable type A-B.
- Software on CD.
- User manual in English and French.



VeryPro-ISP10 programmer

VERYPRO-ISP20

Universal ISP programmer for serial EEPROMs 24Cxx/93Cxx, SPI FLASHs 25xxxx/45xxxx and microcontrollers PIC/AVR/INTEL, on USB2.0 port

Introduction :

VeryPro-ISP20 is an universal programmer for serial EEPROM, serial FLASHs, PLDs and microcontrollers PIC and ATMEL with 10 wires SPI connectors. It permits you to directly program the devices soldered on printed circuits or devices in special packages without having to add an adapter. It supports over 6.900 components from 55 different manufacturers. It accepts components in 5.0V and 3.3V low voltage. It does not require any external power supply and the software works with Windows XP/VISTA/Windows7/Windows8/Windows10 (32bits and 64 bits).

Device supported list :

Program more than 6.900 different components. Consult the datasheet of this product to see the full device list.

Item includes :

- Programmer.
- SPI cable with 10 wires.
- PCB card adapter with ZIF48 socket.
- USB cable type A-B.
- Software on CD.
- User manual in English and French.



VeryPro-ISP20 programmer

VERYPRO-290

Low-cost universal programmer with 40 pins ZIF socket on USB1.1 port for EPROMs / EEPROMs / FLASHs / PLDs / Microcontrollers and IC test

Introduction :

VeryPro-290 is a low-cost universal programmer. It supports over 15.000 different components as EPROMs until 32 pins (2764 to 27C801), parallel EEPROMs (2804 to 28C040), serial EEPROMs (24xx / 25xx / 35xx / 58xx / 59xx / 60xx / 64xx / 85xx / 93xx / 95xx...), FLASH memories in 32 pins (28Fxxx / 29Fxxx / 37xxx / 39xxx / 49xxx), populars microcontrollers (87Cxx / 89Cxx / AT90Sxx / PIC12Cxx / PIC16Cxx / PIC12Fxx / PIC16Fxxx) and PLDs (ATF16Vxx / ATF20Vxx / ATF22Vxx / GAL16Vxx / GAL20Vxx / GAL22Vxx). It has an IC test software to identify logic components (C-mos4000 / 74xxx / LM324 / LM339 / ULN20xx / ULN28xx) and it can test Static RAM / Dynamic DRAM. It can accept low voltage components until 1,5V and has an autodetection for poor pins contacts. With several components it can work without wall transformer on USB port. The software works with Windows 98/ME/2000/XP/VISTA/Windows7/Windows8/Windows10 (32bits and 64 bits).

Hardware & Electrical specifications:

Dimensions: 115 x 79 x 18mm

Weight : 130g

Power supply : adapter with AC input 100V to 240V, 50Hz/60Hz, output 9Vdc/0,6A.

Interface : connect to laptop or PC through USB port (USB 1.1).

Support : ZIF40 pin-drivers, (support 8 pins to 40 pins DIP package).

Device supported list :

Program more than 15.000 different components. Consult the datasheet of this product to see the full device list.

Item includes :

- Programmer with 40 pins ZIF socket.
- Power pack 110-240Vac / 9Vdc.
- USB-5C to USB-A cable.
- Software on CD.
- User manual in English and French.

Options availables:

Universal adapters SOP, PLCC, TSOP, QFP, etc...(Consult the heading of adapters).



VeryPro-290 programmer

SOP8-TEST-CLIP or SOP16-TEST-CLIP

SOP8 programmer testing clip with 8 or 16 pins test clamp with cable

Introduction :

Universal adapter for components in SMD SOP8 or SOP16 package, (width 150 mil or 210mil). For example : EEPROMs i2c and FLASHs SPI type 24Cxx / 25Cxx / 25Fxxxx.

Item includes :

- SOP8 or SOP16 test clip with cable 30cm and HE10 connector.
- Adapter HE10/DIP.
- Adapter FLASHs SPI CMS.



Universal programmers range VeryPro

VERYPRO-390

Universal programmer with ZIF48 socket on USB2.0 port
for E(E)PROMs / FLASHs / PLDs / Microcontrollers

Introduction :

VeryPro-390 is an universal programmer which supports over 21.000 different components among EPROMs with 24/28/32/40 pins (2716 to 27C4096-27C800), parallel EEPROMs (2804 to 28C040), serial EEPROMs (17xx / 24xx / 25xx / SST25Fxx / 29xx / 35xx / 58xx / 59xx / 60xx / 64xx / 85xx / 93xx / 95xx / Pioneer / Bosch), FLASHs memories until 48 pins (28Fxxx / 29Fxxx / 29F160 / 29F800 / 37xxx / 39xxx / 49xxx), populars microcontrollers (77Cxx / 87Cxx / 87C52x / 89Cxx / 97Cxx / AT90Sxxx / ATmegaxx / ATtinyxx / PIC12Cxx / PIC16Cxx / PIC12Fxx / PIC16Fxxx), and PLDs (ATF16Vxx / ATF20Vxx / ATF22Vxx / GAL16Vxx / GAL20Vxx / GAL22Vxx / PALCE16Vxx / PALCE20Vxx / PALCE22Vxx / PEEL22CV10). autodetection of inserted EPROMs. It has an IC test software to identify logic components (C-mos4000 / 74xxx / LM324 / LM339 / ULN20xx / ULN28xx) and it can test Static RAM / Dynamic DRAM. Accepts low-voltage components until 1,5V and has an autotetection for poors pins contacts. It does not need any adapter for all components in SDIP package. With severals components it can work without wall transformers, on USB port only. The software works with Windows XP/VISTA/Windows7/Windows8/Windows10 (32bits and 64 bits).

Device supported list :

Program more than 21.000 different components. Consult the datasheet of this product to see the full device list.

Item includes :

Programmer with ZIF48 socket. Power supply 110-240Vac / 9Vdc.
USB-B to USB-A cable. Software on CD. User manual in English and French.

Options availables :

Universals adapters SOP, PLCC, TSOP, QFP, etc...(Consult the heading of adapters).



VeryPro-390
programmer

VERYPRO-596

Universal programmer with ZIF48 socket on USB2.0 port
for E(E)PROMs, FLASHs, NAND, PLDs, FPGA, Microcontrollers

Introduction :

VeryPro-596 is an universal programmer which supports over 36.000 different components. It also supports a large range of microcontrollers PIC or ATME1 until 100 pins TQFP or NAND FLASH until 93 pins in FBGA with optional adapters. For all others components in SDIP package until 48 pins, it does not need any adapters, because all pins are universals. Equipped with an USB 2.0 port it is very fast to read or program or verify a component. With several components it can work without wall transformer, on USB port only. The VeryPro-596 program EPROMs of 24/28/32/40 pins (2716 to 27C4096-27C800), parallel EEPROMs (2804 to 28C040), more than 6.000 serials EEPROMs (17xx / 24xx / 25xx / SST25Fxx / 29xx / 35xx / 58xx / 59xx / 60xx / 64xx / 85xx / 93xx / 95xx / Pioneer / Bosch), FLASHs memory (28Fxxx / 29Fxxx / 29F160 / 29F800 / 37xxx / 39xxx / 49xxx) included NAND FLASH in BGA package until 93 pins, more than 7.000 microcontrollers (77Cxx / 87Cxx / 87C52x / 89Cxx / 97Cxx / AT90Sxxx / ATmegaxx / ATtinyxx / PIC10Fxx / PIC12Cxx / PIC12Fxx / PIC16Cxxx / PIC16Fxxx / PIC18Cxxx / PIC18Fxxx / PIC24HJxxx / dsPIC30Fxx / dsPIC33Fxx), PLDs (ATFxxx / GALxxx / PALCExxx / PALLVxxx / M4Axxx / PEELxxx / isPLSIxxx / XCxxx). It has an IC test software to identify logic components (C-mos4000 / 74xxx / LM324 / LM339 / ULN20xx / ULN28xx) and it can test Static RAM / Dynamic DRAM. Accept low voltage components until 1,5V and has an autotetection for poors pins contacts. The software works with Windows XP/VISTA/Windows7/Windows8/Windows10 (32bits and 64 bits).

Device supported list :

Program more than 36.000 different components. Consult the datasheet of this product to see the full device list.

Item includes :

Programmer with ZIF48 socket. Power supply 110-240Vac / 9Vdc.
USB-B to USB-A cable. Software on CD. User manual in English and French.

Options availables :

Universal adapters SOP, PLCC, TSOP, QFP, etc...(Consult the heading of adapters).



VeryPro-596
programmer

VERYPRO-996

Universal programmer with ZIF48 socket on USB2.0 port
for E(E)PROMs, FLASHs, NAND, PLDs, FPGA, Microcontrollers

Introduction :

VeryPro-996 is an universal programmer which supports over 105.000 different components. It does not need any adapters for all components until 48 pins SDIP package because each pin of the ZIF48 socket is universals. Over 48 pins some universals adapters are availables to program components with severals package as QFP100 or BGA208. For example, to program all components in PLCC44, only one adapter is necessary. Consult the datasheet of this programmer to know all the device supported list. It supports EPROM, BPROM, EEPROM, FLASH, NAND, PLD, CPLD, EPLD, GAL, PEEL, Microcontrollers). It has an IC test software to identify logic components (C-mos4000 / 74xxx / LM324 / LM339 / ULN20xx / ULN28xx) and it can test Static RAM / Dynamic DRAM. An ISP port can be used with the 10 wires adapters (include) to program the devices soldered on printed circuits or devices in special packages without having to add an adapter. Equipped with an USB 2.0 port it is very fast to read or program or verify a component. Accept low voltage components until 1,5V and has an autotetection for poors pins contacts. The software works with WindowsXP/VISTA/Windows7/Windows8/Windows10 (32bits and 64 bits).

Device supported list : 105.000 components. Consult the datasheet of this product to see the full device list.

Item includes :

- Programmer with ZIF48 socket.
- Power supply 110-240Vac / 9Vdc.
- USB-B to USB-A cable.
- SPI cable with 10 wires.
- Software on CD.
- User manual in English and French.

Options availables :

Universals adapters SOP, PLCC, TSOP, QFP, etc...(Consult the heading of adapters).



VeryPro-996
programmer



Specialised universal programmers range *VeryPro*

VERYPRO-298S

Specialized universal programmer for EEPROMs 24xxx/25xxx/93xxx and serial SPI FLASH 25xxxx, ZIF48 pins socket, USB 2.0 port

Introduction:

VeryPro-298S is a specialised universal programmer for programming EEPROMs i2c and FLASHs spi which supports over 16.000 different components among the following memories (17xx/24xx/25xx/SST25Fxx/29xx/35xx/58xx/59xx/60xx/64xx/85xx/93xx/95xx/Pioneer/Bosch,etc...) until 256MB. It can detect automatically the EEPROMs inserted. It has an IC test software to identify logic components (C-mos4000/74xxx/LM324/LM339/UIN20xx/UIN28xx) and it can test Static RAM / Dynamic DRAM. Accepts low-voltage components until 1,5V and has an autotetection for poor pins contacts. It does not need any adapter for all SDIP package. With several components it can work without wall transformer, on USB port. The software works with Windows 98/ME/2000/XP/VISTA/Windows7/Windows8/Windows10 (32bit/64 bit).

Device supported list :

Program more than 16.000 different components.
Consult the datasheet of this product to see the full device list.

Item includes :

- Programmer with 48 pins ZIF socket.
- Power pack 110-240Vac / 9Vdc.
- USB-5C to USB-A cable.
- Software on CD.
- User manual in English and French.

Options availables:

Universals adapters SOP, PLCC, TSOP, QFP, etc...(Consult the heading of adapters).



VeryPro-298S programmer

VERYPRO-ISP200

Specialized universal programmer for In-Situ programming of memory, ICSP cable, USB 2.0 interface or stand-alone mode

Introduction:

The ISP200 is a universal programmer specialized for the In-Situ programming. It supports over 33.000 components references. This programmer is not equipped with a Zro Insertion Force ZIF48 socket, but it is equipped with a ribbon ICSP cable composed of 10 wires with tips for connecting them on the connector HE10 or on a test clip. This allows of programming previously welded components on a card and unables to be positioned on a classic ZIF48 socket.

This programmer benefits also from the opportunity to work in stand-alone mode thank to its internal memory, thus allowing increased convenience in travel status for maintenance, or allowing to optimize the speed of the programming during serial industrial programming. Its blue LCD backlight display and its intuitive one-touch keys on the housing provide also a fast use for the programming/verifying of components.

It supports low-voltage components until 1,5V. It detects automatically the insertion of a component and identifies defective pins contacts. The programming software accepts all standards files formats (JEDEC, INTEL (Extended) HEX, HOLTEK, EMC.(CDS), INTEL HEX16, Motorola-S record, BINARY, Tektronix (linear & segmented), and «auto find format». Its software manages 16 bits and 32 bits files formats. It works with Windows XP/2000/VISTA/Windows7/Windows8/Windows10 (32/64bits).

Device supported list :

Consult the datasheet of this product to see the full device list.

Item includes :

- Programmer with HE10 sockets.
- Power pack 110-240Vac / 9Vdc.
- USB cable type A-B.
- SPI cable with 10 wires.
- Software on CD-ROM.
- User manual in English and French.



VeryPro-ISP200 programmer



VERYPRO-AUTO300

Specialized universal programmer for automotive applications, ZIF48 socket and ISCP cable, USB 2.0 interface

Introduction:

The Auto-300 is a universal programmer specialized for the programming of memories used in automotive industry. It supports over 9.000 components specifically used in the cars thus allowing to reprogram the mapping of motor vehicles or to reprogram the EEPROMs of car-radios with the code has been lost. It programs the EPROMs, EEPROMs, serial FLASHs, Serial PROMs from different manufacturers as well as microcontrollers Atmel (AT89S, AT90S, ATmega, ATtiny), MOTOROLA, FREESCALE, MICROCHIP (PIC16Fxxx), ST-MICRO. (STM8Axxx), TEXAS-INSTRUMENTS (TMS370Cxxx).

It supports low-voltage components until 1,5V. It detects automatically the insertion of a component and identifies defective pins contacts. The programming software accepts all standards files formats, (JEDEC, INTEL (Extended) HEX, HOLTEK, EMC.(CDS), INTEL HEX16, Motorola-S record, BINARY, Tektronix (linear & segmented), and «auto find format». Its software manages 16 bits and 32 bits files formats. It works with Windows XP/2000/VISTA/Windows7/Windows8/Windows10 (32/64bits).

Device supported list :

Consult the datasheet of this product to see the full device list.

Item includes :

- Programmer with 48 pins ZIF socket.
- Power pack 110-240Vac / 9Vdc.
- USB cable type A-B.
- SPI cable with 10 wires.
- Software on CD-ROM.
- User manual in English and French.

Options availables:

Universals adapters SOP, PLCC, TSOP, QFP, etc...(Consult the heading of adapters).



VeryPro-AUTO300 programmer



Stand-alone universal programmers range VeryPro

GANGPRO-400 / GANGPRO-600 / GANGPRO-800

Universal programmers, ZIF48 socket and ICSP cable, USB port or stand-alone mode for Eprom, EEproms, Flash, PLD, Microcontrollers

Introduction:

The programmers GangPro-400 / GangPro-600 / GangPro-800 are universal devices allowing the programming of the most of programmable components, (EPROM, BPROM, EEPROM, FLASH, NAND, PLD, CPLD, EPLD, GAL, PEEL, Microcontrollers). It allows also the test of some components, (TTL and C-MOS logic circuits, DRAM and SRAM dynamic memories). Full datalist of components supported by the programmers of GangPro series are available consulting the product datasheet. Moreover new components are added continuously during software updating available for free by Internet.

All the components in SDIP package, until 48 pins are directly programmable on the ZIF48 socket without requiring to add optional adapters, every pin of the programmers being configurable independently are universals. Over 48 pins, or for components having different packages as SOP, SSOP, TSOP, PLCC, QFP, BGA, optional adapters available on request allow to program these components. These adapters are also universals for every type of package to program it.

The programmers of the GangPro series are equally equipped with an ISP interface and are delivered with a 10 wires cable for the In-Situ programming of components previously welded on a card fitted with an HE10 connector and unables to be positionned on the ZIF48 socket, that making them ever more universals.

These programmers can work either connected to an USB connector of a computer, or working in a stand-alone mode thanks to its internal memory. All this allows a more convenient use in travel status, or on maintenance, or to optimize the programming speed during the serial industrial programming. Its blue backlight LCD display and its intuitive one-touch keys on the housing can be used quickly for the programming/verifying of components.

Programmer's electronics can be used to set up algorithms with an accuracy of 0,01V and a resolution of 1 μ s. They can support low voltage components until 1,5V. When the component is inserted, a state component pins test is performed to detect anomalies. The programmer is also protected against insertion errors with a protection against over-voltages and short-circuits. The automatic detection of components can be activated when a component is inserted on the ZIF48 socket in order to allow an automatic programming of this one without handling of the keyboard buttons.

The software which manages all these programmers accept all sizes of standard files, (JEDEC, INTEL (Extended) HEX, HOLTEK, EMC(CDS), INTEL HEX16, Motorola-S record, BINARY, Tektronix (linear & segmented), and «auto find format»). It manages the files in 16 bits and 32 bits format. It works with Windows XP/2000/VISTA/Windows7/Windows8/Windows10 (32/64bits).

Device supported list :

GangPro-400	GangPro-600	GangPro-800
41786	95163	101992

Consult the datasheet of this product to see the full device list.

Item includes :

- Programmer with 48 pins ZIF socket.
- Power pack 110-240Vac / 9Vdc.
- USB cable type A-B.
- ICSP cable with 10 wires.
- Software on CD-ROM.
- User manual in English and French.

Options availables:

Universals adapters SOP, PLCC, TSOP, QFP, etc...(Consult the heading of adapters).



GangPro-400 programmer



GangPro-600 programmer



ISP cable



GangPro-800 programmer

SUPERPRO-610P

Universal programmer, with ZIF48 socket on USB port
for EPROMs EEPROMs FLASHs PLDs and Microcontrollers

Introduction :

The SuperPro-610P is an universal programmer equipped with ARM7 processor in USB-2. Thanks to its ZIF48 socket it can program over 33.000 different components among EPROMs, EEPROMs, FLASHs memories, PLDs and micro-controllers. It can program low-voltage components until 1,2V. It does not need any adapters for all components in SDIP package. The programming is extremely fast thanks to the use of algorithm technology downloaded in the CPU of the programmer during the selection of a device. The SuperPro-610P can also test the pins of the inserted device to detect possible faults : incorrect insertion of the device, defective pin...etc. It is also protected against shorts and overvoltage. An optional ISP adapter permits to program components soldered on printed circuits or devices in special packages. The software works with Windows 98/ME/NT/2000/XP/Windows7/Windows8/Windows10 (32/64 bits). It allows advanced production functions such as automatic programming as soon as the device is detected, verification of the device ID and automatic generation of serial numbers in the device. Free updates are regularly available on the Internet.

Device supported list :

Program more than 33.000 different components. Consult the datasheet of this product to see the full device list.

Item includes :

- Programmer with 48 pins ZIF socket.
- Power pack 85-260Vac / 12Vdc.
- USB-B to USB-A cable.
- Software on CD.
- User manual in English and French.



SuperPro-610P
programmer

SUPERPRO-611S

Universal programmer with stand-alone mode, ZIF48 socket on USB port
for EPROMs EEPROMs FLASHs PLDs and Microcontrollers

Introduction :

The SuperPro-611S is an universal programmer equipped with ARM7 processor in USB-2. Thanks to its ZIF48 socket it can program over 36.000 different components among EPROMs, EEPROMs, FLASHs memories, PLDs and micro-controllers. A LCD display screen of 20 x 2 characters as well as a keypad allow to use this programmer in stand-alone mode. This mode enables it, thanks to the addition of an optional classical compact Flash card (512 Mb or 1Gb) inserted in the back of the programmer, to download numerous algorithms in the SuperPro-611S. Therefore, this allows it to operate without a computer in cases when you need to use it away from the office, or just when you want to use the SuperPro-611S as a production programmer to make copies very quickly with the automatic detection of a device's presence to start programming (5 times faster than when it is connected to a PC). It can program low-voltage components until 1,2V. It does not need any adapters for all components in SDIP package. The programming is extremely fast thanks to the use of algorithm technology downloaded in the CPU of the programmer during the selection of a device. The SuperPro-611S can also test the pins of the inserted device to detect possible faults : incorrect insertion of the device, defective pin...etc. It is also protected against shorts and overvoltage. An optional ISP adapter permits to program components soldered on printed circuits or devices in special packages. The software runs under Windows 98/ME/NT/2000/XP/Windows7/Windows8/Windows10 (32/64 bits). It allows advanced production functions such as an automatic programming as soon as the device is detected, verification of the device ID and automatic generation of serial numbers in the device. Free updates are regularly available on the Internet.

Device supported list :

Program more than 36.000 different components. Consult the datasheet of this product to see the full device list.

Item includes :

- Programmer with 48 pins ZIF socket.
- Power pack 85-260Vac / 12Vdc.
- USB-B to USB-A cable.
- Software on CD. User manual in English and French.



SuperPro-611S
programmer

SUPERPRO-6100

Universal programmer with stand-alone mode, ZIF48 socket on USB port
expandable to 144 pins, for E(E)PROMs FLASHs PLDs and Microcontrollers

Introduction :

The SuperPro-6100 is an universal programmer equipped with ARM7 processor in USB-2. Thanks to its ZIF48 socket it can program over 98.000 different components among EPROMs, EEPROMs, FLASHs memories, PLDs and micro-controllers. Over, it can program components, as BGA package, until 144 programmable pins drivers thanks to its interchangeable socket. A LCD display screen of 20 x 2 characters as well as a keypad allow to use this programmer in stand-alone mode. This mode enables it, thanks to the addition of an optional classical compact Flash card (512Mb or 1Gb) inserted in the back of the programmer, to download numerous algorithms in the SuperPro-6100. Therefore, this allows it to operate without a computer in cases when you need to use it away from the office, or just when you want to use the SuperPro-6100 as a production programmer to make copies very quickly with the automatic detection of a device's presence to start programming (5 times faster than when it is connected to a PC). It can program low-voltage components until 1,2V. It does not need any adapters for all components in SDIP package. The programming is extremely fast thanks to the use of algorithm technology downloaded in the CPU of the programmer during the selection of a device. The SuperPro-6100 can also test the pins of the inserted device to detect possible faults : incorrect insertion of the device, defective pin...etc. It is also protected against shorts and overvoltage. An optional ISP adapter permits to program components soldered on printed circuits or devices in special packages. The software works with Windows 98/ME/NT/2000/XP/Windows7/Windows8/Windows10 (32/64 bits). It allows advanced production functions such as automatic programming as soon as the device is detected, verification of the device ID and automatic generation of serial numbers in the device. Updates can be downloaded freely.

Device supported list :

Program more than 98.000 different components. Consult the datasheet of this product to see the full device list.

Item includes :

- Programmer with 48 pins ZIF socket.
- Power pack 85-260Vac / 12Vdc.
- USB-B to USB-A cable.
- Software on CD.
- User manual in English and French.

Options availables:

Universals adapters SOP, PLCC, TSOP, QFP, BGA, etc...(Consult the heading of adapters).



SuperPro-6100
programmer

Universal programmers range SuperPro

SUPERPRO-7500

High-speed universal production programmer, ZIF48 socket expandable up to 4x144 pins sockets. On USB port, RJ45 network port or in stand-alone mode

Introduction :

The SuperPro-7500, latest generation of universal programmers from SuperPro series, includes a ARM11 processor which enables it an unparalleled programming speed. It can work on a USB port or on a LAN port, (RJ45 connector). It currently supports over 55.000 references of components by more than 200 manufacturers. Moreover it supports NAND/eMMC components until 256GB and LR1-LR2/EMMC components until 64MB. It does not required none of optional adapter for all the components in DIP package until 48 pins. Beyond that it can manage, thanks to its removable support, the components until 144 programmable pins. Its ZIF48 support standard can be also replaced by an equipped module with 4 supports in order to use it as production programmer. The low-voltage components until 1,2V are also supported. Moreover it has settable stand-alone mode from a LCD 20x4 character's display and using a keyboard. This stand-alone mode allows, due to a SD-Card included at the back of the appliances to download many algorithms into the programmer. This allows it subsequently working without computer in case of on-site use far from the office or more simply, using the SuperPro-7500 as a production programmer and performing copies very quickly with also an automatic detection of the presence of the component on the sockets to start the programming. The software works with Windows 98/2000/XP/VISTA/Windows7/Windows8/Windows10) in 32/64bits and the updates software are downloadable for free on Internet.

Device supported list :

Program more than 55.000 differents components. Consult the datasheet of this product to see the full device list.

Item includes :

- Programmer with 48 pins ZIF socket.
- Power pack 85-260Vac / 12Vdc.
- USB cable type A-B + SD-Card.
- Software on CD. User manual in English and French.



SuperPro-7500
Programmer

SUPERPRO-6104

Universal production programmer with 4xZIF48 socket expandable to 144 pins for PROMs, E(E)PROMs, FLASHs, PLD, Microcontrôleurs, on USB port

Introduction :

The SuperPro-6104 is an universal production programmer equipped with ARM7 processor in USB-2. Thanks to its 4 independant ZIF48 sockets it can program over 98.000 different components among EPROMs, EEPROMs, FLASHs memories, PLDs and microcontrollers. Over, it can program components until 144 programmable pins drivers thanks to its interchangeable socket. On each support, programing starts automatically and independently when the component is correctly inserted in the socket. It can program low-voltage components until 1,2V. It does not need any adapters for all components in SDIP package. The programming is extremely fast thanks to the use of algorithm technology downloaded in the CPU of the programmer during the selection of a device. The SuperPro-6104GP can also test the pins of the inserted device to detect possible faults : incorrect insertion of the device, defective pin...etc. It is also protected against shorts and overvoltage. An optional ISP adapter permits to program components soldered on printed circuits or devices in special packages. It allows advanced production functions such as verification of the device ID and automatic generation of serial numbers in the device. The software runs under Windows 98/ME/NT/2000/XP/Windows7/Windows8/Windows10 (32/64 bits). Free updates are regularly available on the Internet.

Device supported list :

Program more than 98.000 different components. Consult the datasheet of this product to see the full device list.

Item includes :

- Programmer with 4x48 pins ZIF socket.
- Power pack 85-260Vac / 12Vdc.
- USB-B to USB-A cable.
- Software on CD.
- User manual in English and French.



SuperPro-6104
programmer

SUPERPRO-IS01

Universal programmer with ICSP connector, on USB port or stand-alone mode for PROMs, E(E)PROMs, FLASHs, PLD, Microcontrollers

Introduction:

The universal programmer SuperPro-IS01, allows to program, thanks to its output HE10 connector including a 20 wires ribbon cable, components welded on a card wich has an ICSP connector (IN-System programming). This 20 wires ribbon cable connected to a test clip, also allows to program CMS components previously Welded on a card. This small-sized programmer is also convenient in travel status because it includes a keyboard and a 4x16 characters LCD display for use in stand-alone mode without connecting it to a computer, (Usable with an SD-Card at the back of the housing). It currently supports over 10.000 components from 172 different manufacturers, (see full list in datasheet) and it can support low-voltage components until 1,2V. It includes all ICSP standards protocols as well as I2C, SPI, UART, BDM, MW, JTAG, CAN, RS232. It benefits equally of a protection against short-circuits. Including a ARM9 32bits RISC processor, it can program components very quickly and it can optimise programming algorithms. The software can also define projects for a specific component of the library of components with the following functions : read, erase, virgin test, programming, verifying and definition of the source file to program, all that allowing programming in production mode. It works with WindowsXP/Vista/Windows7/Windows8/Windows10 (32/64 bits).

Device supported list :

Program more than 10.000 different components. Consult the datasheet of this product to see the full device list.

Item includes :

- Programmer.
- Power pack 85-260Vac / 12Vdc.
- Software on CD.
- User manual.
- USB cable type A-B.
- ICSP cable with 20 wires, A type, (for all interfaces except CAN and RS232).

Options : - Specific SD-Card with the programmer. - ICSP cable, B type, (for interfaces CAN and RS232).



SuperPro-IS01
programmer

ISP-HEADER01

Adapter ISP/ICP for programmers SUPERPRO

Introduction :

ISP adapter for ZIF48 socket to program components soldered on printed circuits or devices in special packages.

Item includes :

Adapter with wires and connectors, pitch 2,54mm.



Universal programmers range TopMax

CHIPMAX-2

Universal programmer with ZIF48 socket on USB2.0 port
for EPROMs, EEPROMs, FLASHs, NANDs, PLDs, Microcontrollers

Introduction :

The CHIPMAX-II is the new version of the universal programmer CHIPMAX. Ultra-fast, it can transfer data up to 2.5Mb/second thanks to its USB 2.0 connection and its built-in processor which enables it to buffer the data in its memory. It is equipped with a ZIF48 socket of which each pin's parameter can be entirely set. It does not require any supplementary adapter for all the devices in DIP packages of 6 to 48 pins. It also accepts all the low-voltage devices 1.8V / 2.0V / 2.5V / 2.7V / 3.0V / 3.3V and 5.0V. When inserting a device, an auto-search of its reference can be made. The device is also tested to detect an eventual defective pin. A « Start » button allows to directly launch the actions already configured in the software to use it in production programming mode. It supports also NAND Flash components. The CHIPMAX-II is also provided with a JTAG connector (IEEE-1149.1 compliant) . Its user-friendly interface currently handles over 17,000 device references. The software runs under Windows 98/ME/NT/2000/XP/Windows7/Windows8/Windows10 (32/64 bits). Updates can be download freely.

Device supported list :

Consult the datasheet of this product to see the full device list.

Item includes :

- Programmer with 48 pins ZIF socket.
- Power pack (110V à 240Vac 50Hz to 60Hz / 12Vdc/2,5A).
- USB-B to USB-A cable.
- Software on CD.
- User manual in English and French.

Options availables :

Universals adapters SOP, PLCC, TSOP, QFP, etc...(Consult the heading of adapters).



ChipMax-2
programmers

TOPMAX-2

Universal programmer with ZIF48 socket on USB2.0 port
for PROMs EPROMs, EEPROMs, FLASHs, NANDs, PLDs, Microcontrollers

Introduction :

The TOPMAX-II is the new version of the universal programmer TOPMAX. It allows you to program memory with a speed up to 2.5 Mb/second thanks to its connection on USB 2.0 port, and its integrated processor allows it to load files directly in its memory. It permits programming of the most recent devices, including PROMs, EPROMs, EEPROMs, Flash Memory, FPGAs, PALs, GALs, EPLDs and microcontrollers. Its ZIF socket is equipped with 48 pins entirely and independently parametrizable enabling it to program all the 6 to 48-pin devices without having to add any supplementary adapter. It also automatically detects defective device pins. Sockets can be added if the chip to be programmed is not in a DIP package, such as PLCC, LCC, TSOP, PSOP, SOP, QFP, TQFP, µBGA, FBGA, etc... TOPMAX-II's software can handle over 18,000 device references and can also be used with 8 programmers simultaneously for production programming. Moreover, an « Auto function » key has been added to the programmer to immediately start programming a device. The TOPMAX-II supports devices in 1.8V / 2.0V / 2.5V / 2.7V / 3.0V / 3.3V / 5.0V. An IEEE-1149.1 compliant JTAG connector is also provided with this universal programmer. Works with MaxLoader software for Windows98/2000/XP/VISTA/Windows7/Windows8/Windows10 (32/64bits).

Device supported list :

Consult the datasheet of this product to see the full device list.

Item includes :

- Programmer with 48 pins ZIF socket.
- Power cord, (input power 110V-240Vac 50Hz-60Hz).
- USB-B to USB-A cable. Software on CD.
- User manual in English and French.

Options availables :

Universals adapters SOP, PLCC, TSOP, QFP, etc...(Consult the heading of adapters).



TopMax-2
programmer

PROMAX-4G

Universal production programmer, 4 x ZIF48 sockets, on USB2.0 port
for EPROMs, EEPROMs, FLASHs, NANDs, PLDs, Microcontrollers

Introduction :

The PROMAX-4G programmers offer the possibility to program simultaneously and independently 4 devices. Delivered with ZIF48 universal sockets, they enable the user to program up to 17,000 references of different devices among PROMs, EPROMs, EEPROMs, FLASHs, NAND, GAL, PEEL, EPLD, FPGA, PAL, GAL, EPLD and Microcontrollers. They also handle low-voltage devices in 1.8V / 2.0V / 2.5V / 2.7V / 3.0V / 3.3V / 5.0V. The source program can be loaded via the USB connection or via a master to place on the first socket of the programmer. The « Start » key allows you to immediately launch programming. The programming speed is extremely fast as the transfer speed can reach 2.5 Mb/second. The PROMAX-4G offer the double function of universal development programmers and universal production programmers thanks to their multi-support technology. Accept Binary, ASCII, Intel, MotorolaS, Tektronik, JEDEC, POF formats. Works with MaxLoader software for Windows98/2000/XP/VISTA/Win7/Win8/Win10 (32/64bits).

Device supported list :

Program more than 17.000 different components. Consult the datasheet of this product to see the full device list.

Item includes :

- Programmer with 48 pins ZIF socket.
- Power cord, (input power 110V-240Vac 50Hz-60Hz).
- USB-B to USB-A cable. Software on CD.
- User manual in English and French.

Options availables :

Universals adapters SOP, PLCC, TSOP, QFP, etc...(Consult the heading of adapters).



ProMax-4G
programmer



ProMax-4G
(Rear view)

Universal programmers range TopAll

TOP2013

Universal programmer with 40 pins ZIF socket on USB 2.0 port for EPROM, EEPROM, FLASH, STC Microcontrollers

Introduction :

TOP2013 is a low-cost universal programmer. It supports different components as EPROMs until 32 pins (2716 to 27C801) 12,5V to 25V, parallel EEPROMs (2816 to 28C040), serial EEPROMs (24xx / 25xx / 93xx), FLASH memories in 32 pins (28Fxxx / 29Fxxx / 37xxx / 39xxx / 49xxx), populars microcontrollers (87Cxx / AT89Cxx / AT90xx / STC89xx / STC10Fxx / STC11Fxx / STC12Cxx / STC90Cxx / PIC12Cxx / PIC16Cxx / PIC12Fxx / PIC16Fxxx) and PLDs (ATF16Vxx / ATF20Vxx / ATF22Vxx / GAL16Vxx / GAL20Vxx / GAL22Vxx). This programmer is based on ARM Cortex 32 core. It has small size and low power loss. It can communicate with PC through USB port and does not need external power supply. It has perfect over current protection on all pins and it can prevent the programmer and the devices from damaging. Automatically detect components are plugged well or not, if the component is in the wrong position, a message will prompt. The software works with Windows 98/ME/2000/XP/VISTA/Windows7/Windows8/Windows10 (32bit and 64 bit).

Device supported list :

Consult the datasheet of this product to see the full device list.

Features:

Full driving with 40 pin(Vpp/Vcc/GND/TTL), good for future upgrading.
Support 2.5V to 6.5V device.
Selectable to use USB or external 5V power supplier to supply power.
Transmission speed is 12MHz/s.
Suitable to work with Desktop and Laptop.
With current protection function, effectively protects the programmer and devices.
Automatic Pin status detection.
Auto detect company and type of the IC.
Supports Windows XP / VISTA / Windows 7 / Windows 8.1 / Windows10 (32bit and 64bit).

Hardware & Electrical specifications:

Dimensions device : 155 x 110 x 26mm. Weight : 275g
Power supply : adapter with AC input 100V to 240V, 50Hz/60Hz, output 5Vdc/2A.
Interface : connect to laptop or PC through USB port (USB 2.0 high speed)
Support : ZIF40 universal pin-drivers, (support 8 pins to 40 pins DIP package).

Item includes :

- Programmer 40 pins ZIF socket.
- Power pack.
- USB-B to USB-A cable.
- Software on CD-ROM.
- User manual in English.



TOP3100

Programmeur universel, support ZIF48, Port USB.
Pour EPROM, EEPROM, FLASH, PLD, FPGA, STC Microcontrôleurs

Introduction :

TOP3100 is an universal programmer which supports a large range of microcontrollers STC, PIC or ATMEL. Equipped with an USB 2.0 port it is very fast to read or program or verify a component. With several components it can work without wall transformer, on USB port only. It programs EPROMs of 24/28/32/40 pins (2716 to 27C4096-27C800), parallel EEPROMs (2816 to 28C040), serials EEPROMs and FLASHs SPI (17xx / 24xx / 25xx / 29xx / 35xx / 58xx / 59xx / 60xx / 64xx / 85xx / 93xx / 95xx), FLASHs memories (28Fxxx / 29Fxxx / 29F160 / 29F800 / 37xxx / 39xxx / AT49xxx), microcontrollers (W78Cxx / 87Cxx / 89Cxx / 97Cxx / AT90Sxxx / ATmegaxx / ATtinyxx / PIC10Fxx / PIC12Cxx / PIC12Fxx / PIC16Cxxx / PIC16Fxxx / PIC18Cxxx / PIC18Fxxx, STC10xx / STC11xx / STC12xx / STC90xx), PLDs (ATFxxx / GALxxx / PALCExxx / PALLVxxx / M4Axxx / PEELxxx / isPLSxxx / XCxxx). It supports low-voltage components from 2,5V to 6,5V. This programmer is based on ARM Cortex 32 core. It has a small size and a low-power loss. It communicates with PC through USB port and does not need external power supply for most of components. It has perfect over current protection on all pins and it can prevent the programmer and the devices from damaging. Automatically detect components are plugged well or not, if the component is in the wrong position, a message will prompt. The software works with Windows 98/ME/2000/XP/VISTA/Windows7/Windows8/Windows10 (32bit and 64 bit).

Device supported list :

Consult the datasheet of this product to see the full device list.

Features :

Full driving with 48 pin(Vpp/Vcc/GND/TTL), good for future upgrading.
Support 2.5V to 6.5V device.
Selectable to use USB or external 5V power supplier to supply power.
Transmission speed is 12MHz/s.
Suitable to work with Desktop and Laptop.
With current protection function, effectively protects the programmer and devices.
Automatic Pin status detection.
Auto detect company and type of the IC.
Supports Windows XP / VISTA / Windows 7 / Windows 8.1 / Windows10 (32bit and 64bit).

Hardware & Electrical specifications :

Dimensions device : 155 x 110 x 26mm. Weight : 275g
Power supply : adapter with AC input 100V to 240V, 50Hz/60Hz, output 5Vdc/2A.
Interface : connect to laptop or PC through USB port (USB 2.0 high speed)
Support : ZIF48 universal pin-drivers, (support 8 pins to 40 pins DIP package).

Item includes :

- Programmer 48 pins ZIF socket.
- Power pack.
- USB-B to USB-A cable.
- Software on CD-ROM.
- User manual in English.



Chip programming adapters

Specific adapters

ADA-xxx

Adapters and converters for programmers

Introduction :

Below, you will find a list of the most common universal adapters which can fit all types of programmers equipped with ZIF sockets in SDIP32, SDIP40 or SDIP48.

Others specific adapters are available for all our programmers in package SDIP, PLCC, JLCC, SOIC, QFP, TQFP, VQFP, SOP, TSOP, STSOP, PSOP, TSSOP, SON, EBGA, FBGA, VFBGA, μ BGA, CSP, SCSP, etc.

Thoses adapters are available on request.

If you do not know which adapter you can use with your chip; thank you to give us the type of programmer used, the reference of the chip and the package of the chip.



SO/SOP adapters

ADA-SOIC16-150 Adapter DIP16 to SOP8/SOP14/SOP16

Introduction :

Universal adapter for components in SMD SOP8/SOP14/SOP16 package, (width 150 mil).
For example : EEPROMs and Serial FLASHs type 24Cxx / 25Cxx / 25Fxxxx.

Equivalent adapters from other manufacturers :

WL-SOP16-U001 / SA602 / PA16SO16D-EO-150

ADA-SO20-200 Adapter DIP20 to SOP8/SOP16/SOP20

Introduction :

Universal adapter for components in SMD SOP8/SOP16/SOP20 package, (width 200mil or 210mil).
For example : Serials FLASHs type 25Fxxxx

Equivalent adapters from other manufacturers :

WL-SOP20-U001 / SA605 / PA20SO20D-EO-210

ADA-SO28-300 Adapter DIP28 to SOP18/SOP28

Introduction :

Universal adapter for components in SMD SOP18/SOP28 package, (width 300mil).
For example : PIC microcontrollers.

Equivalent adapters from other manufacturers :

WL-SOIC28-U001 / SA404 / PA28SO28D-EO-300

ADA-SO44-600 Adapter DIP48 to SOP44

Introduction :

Universal adapter for components in SMD SOP44 package, (width 600mil).
For example : FLASHs memories 29Fxxxx.

Equivalent adapters from other manufacturers :

WL-SOP44-U001 / SA638 / PA44SO44D



TSOP adapters

ADA-TSOP28-12 Adapter DIP28 to TSOP28

Introduction :

Universal adapter for components in SMD TSOP28 package, (width 12mm).

Equivalent adapters from other manufacturers :

WL-TSOP28-U102 / SA430T / PA28TS28D-EO

ADA-TSOP32-14 Adapter DIP32 to TSOP32

Introduction :

Universal adapter for components in SMD TSOP32 package, (width 8mm x14mm).
For example : EEPROMs 28Fxxxx, FLASHs memories 29Fxxxx/39Fxxxx.

Equivalent adapters from other manufacturers :

WL-TSOP32-U002 / SA620 / PA32TS14-OT

ADA-TSOP32-20 Adapter DIP32 to TSOP32

Introduction :

Universal adapter for components in SMD TSOP32 package, (width 8mm x20mm).
For example : EEPROMs 28Fxxxx, FLASHs memories 29Fxxxx/39Fxxxx.

Equivalent adapters from other manufacturers :

WL-TSOP48-U001 / SA410T / PA32TS32D

ADA-TSOP48-20 Adapter DIP48 to TSOP40/TSOP48

Introduction :

Universal adapter for components in SMD TSOP40/TSOP48 package, (width 10mm x 20mm).
For example : FLASHs memories 29Fxxxx.

Equivalent adapters from other manufacturers :

WL-TSOP48-U001 / SA247 / PA48TS48D



Chip programming adapters

SSOP adapters

ADA-SSOP28-170 Adapter DIP28 to SSOP28

Introduction :

Universal adapter for components in SSOP8 / SSOP16 / SSOP20 / SSOP28 package.

Equivalent adapters from other manufacturers :

WL-SSOP34-U001 / WL-SSOP28-U001 / SA626A



PLCC adapters

ADA-PLCC28 Adapter DIP28 to PLCC28

Introduction :

Universal adapter for components in PLCC28 package.

Equivalent adapters from other manufacturers :

WL-PL28-U001 / SA008A / PA28PL28D



ADA-PLCC32-32 Adapter DIP28/DIP32 to PLCC32

Introduction :

Universal adapter for components in PLCC32 package. Delivered with two DIP28 and DIP32 connectors. For EPROMs 27C64 to 27C512 and EPROMs 27C1001 à 27C801, EEPROMs 28Cxxx FLASHs memories 28Fxxx/29Fxxx/39Fxxx/49Fxxx.

Equivalent adapters from other manufacturers :

WL-PL32-U001 / SA015A1T (SA002 + SA003) / PA32PL32D (PA32-28 + PA32-32)



ADA-PLCC44-44 Adapter DIP48 to PLCC44

Introduction :

Universal adapter for components in PLCC44 package. Specific for programmer with ZIF48 socket. For EPROMs, PLDs and Microcontrollers in PLCC44 package.

Equivalent adapters from other manufacturers :

WL-PL44-U001 / SA244 / PA44-48U



TQFP adapters

ADA-TQFP32 Adapter DIP32 to TQFP32

Introduction :

Universal adapter for components in TQFP32 package, dimensions 8x8mm.

Equivalent adapters from other manufacturers :

WL-QFP32-U002 / SA636 / PA32TQ32DA



ADA-TQFP44 Adapter DIP48 to TQFP44

Introduction :

Universal adapter for components in TQFP44 package, dimensions 11x11mm.

Equivalent adapters from other manufacturers :

WL-TQFP44-U002 / SA245A / PA44QF44D



MLF/QFN adapters

ADA-QFN28 Adapter DIP28 to MLF28/QFN28

Introduction :

Universal adapter for components in MLF28 or QFN28 package, dimensions 6x6mm.

Equivalent adapters from other manufacturers :

WL-QFN28-U203 / SA685 / PA28QFN28D



ADA-QFN44 Adapter DIP44 to MLF44/QFN44

Introduction :

Universal adapter for components in MLF44 or QFN44 package, dimensions 8x8mm.

Equivalent adapters from other manufacturers :

WL-QFN44-U202 / SA712 / PA44QFN44D



ZIF48 adapters

ADA-ZIF48 Universal adapter ZIF48 to HE10 connectors

Introduction :

ADA-ZIF48 is an adapter for programming of all types of devices with In-Circuit Serial/In-System Programming (ICSP/ISP). The adapter is provided with the 40 pins ZIF socket which accepts 300 to 600 mils wide devices.

Item includes:

PC board with ZIF48 socket.



Electromagnetic fields spectrum analyzers Low Frequency (EMF)

SPECTRAN-NF-1010E

Electromagnetic fields analyzers Low Frequency 10Hz - 10KHz

Introduction :

Based on a patented spectrum analyzer method we can offer a professional EMF measurement. Detect sources of interference, find out more about their causes, determine the frequency and intensity of the signal sources, measure limits and more. All SPECTRAN units offer a USB interface with real-time remote control to your PC or MAC. The free analyzer software, which is available for MAC OS, Linux and Windows, transforms any SPECTRAN in a powerful measurement solution with great features (e.g. recording, multiple window display, histogram, waterfall diagram, unlimited number of markers, enhanced limits display etc.) All SPECTRAN units offer a powerful limits display. Just push the «limits button» at our Spectrum Analyzer and the high-performance Digital Signal Processor (DSP) of the SPECTRAN constantly calculates the limits and displays the results in real-time. Spectrum analyzers with this high-end feature usually cost thousands of Euros. Just save this cost by using analyzers. All EMF NF SPECTRANs include our award winning 3D (isotropic) sensor to measure magnetic fields and a field plate sensor to measure electric fields. Both sensors cover the full frequency range of the SPECTRAN unit.

Frequency range: 10Hz - 10KHz

Electric field measurement: 1V/m to 2000V/m

Magnetic field measurement: 1nTesla to 100μTesla

Magnetic field measurement: 10μGauss to 1000mGauss.

Additional analog input for ADP1 or PBS1 with SMA connector: not compatible

Pass band: 1Hz à 3KHz. Sampling: 50ms.

Audio: AM demodulator with speaker and jack 2,5mm.

Flash memory: not compatible.

Resolution: 64 dots. Accuracy: 5%.



Range SPECTRAN-NF

SPECTRAN-NF-3020

Electromagnetic fields analyzers Low Frequency 10Hz - 400KHz

Introduction :

Same functionality as the previous analyzer but with better frequency range and better electromagnetic field.

It permits to record during a long time in place (data logger) thanks to its 64Kb flash memory, (extension memory up to 1Mb with option-180). Analog SMA input includes to connect external measurement devices, (sensibility 200nV to 200mV) as ADP1 (Probe for components board) and PBS1 (to detect CEM and CEME electromagnetics fields). This device accepts equally several options as 3D sensor for static magnetic fields.

Frequency range: 10Hz - 400KHz

Electric field measurement: 1V/m to 5000V/m

Magnetic field measurement: 1nTesla to 100μTesla

Magnetic field measurement: 10μGauss to 1000mGauss.

Additional analog input for ADP1 or PBS1 with SMA connector: 2μV to 200mV.

Pass band: 1Hz à 100KHz. Sampling: 50ms.

Audio: AM demodulator with speaker and jack 2,5mm.

Flash memory: 64Kb.

Resolution: 64 dots. Accuracy: 5%.



Isotropic 3D antenna (integrated)

SPECTRAN-NF-5030 & SPECTRAN-NF-5030S

Electromagnetic fields analyzers Low Frequency 1Hz - 1000KHz

Introduction :

Same functionality as the previous analyzer but with better frequency range and better electromagnetic field.

It permits to record during a long time in place (data logger) thanks to its 64Kb flash memory, (extension memory up to 1Mb with option-180). Analog SMA input includes to connect external measurement devices, (sensibility 200nV to 200mV) like ADP1 (Probe for components board) and PBS1 (to detect CEM and CEME electromagnetics fields). This device accept equally several options like 3D sensor for static magnetic fields.

Frequency range: 1Hz - 1MHz (expandable up to 20MHz or 30MHz in option)

Electric field measurement: 0,1V/m à 5.000V/m, (1V/m to 50.000V/m for the NF-5030S).

Magnetic field measurement: 1nTesla à 500μTesla, (100pTesla to 20.000μTesla for the NF-5030S).

Magnetic field measurement: 10μGauss à 5.000mGauss, (100μGauss to 20.000mGauss for the NF-5030S).

Additional analog input for ADP1 or PBS1 with SMA connector: 200nV to 200mV.

Pass bande: 0,3Hz à 10MHz. Sampling: 10ms.

Audio: AM demodulator with speaker and jack 2,5mm.

Flash memory: 64Kb, (expandable up to 1Mb in option).

Resolution: 1024 dots. Accuracy: 3%.

Item includes for SPECTRAN-NF serie :

Spectrum analyzer (Isotropic 3D antenna integrated).

1300mA/h battery with battery charger and power supply.

USB cable.

Software on CD-ROM.

User manual on CD-ROM.

Aluminium carrying case.

Options available for SPECTRAN-NF-5030 and SPECTRAN-NF-5030S:

OPTION-001 : Extension memory 1Mb.

OPTION-002 : High precision timebase 0,5ppm.

OPTION-008 : 20MHz frequency extension.

OPTION-009 : 24 bits resolution for 3D static magnetic field sensor.

OPTION-010 : 30MHz frequency extension

OPTION-020 : Preamplifier 15db.

OPTION-252 : Battery replacement 7,2V/1300mAh.

OPTION-254 : Lithium battery replacement 7,2V/3000mAh.

OPTION-290 : Carrying case in rubber for analyzers.

ADP1 : Active differential probe (DC to 30MHz) for PCB electronics boards.

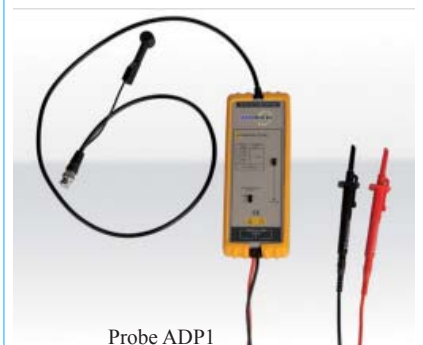
PBS1 : EMI/EMC near field probe set sniffer, 5 probes 1Hz to 6GHz.



SPECTRAN-NF + Probe PBS1



Probes PBS1



Probe ADP1

Electromagnetic fields spectrum analyzers High Frequency (RF)

SPECTRAN-HF-2025E (Version 3)

Electromagnetic fields analyzers High Frequency 700MHz - 2500MHz

Introduction :

The low-cost spectrum analyzer. Handy and cost-effective. Including directional antenna, charger, battery, free of cost Spectrum-Analyzer-Software and more. The performance and price offered by the SPECTRAN series make it a highly valuable tool for engineers that have only rare requirements for a spectrum analyser. EMC evaluation testing and RF interference can be identified quickly. As well as being lower cost, the SPECTRAN RF units are much smaller, lower power and lighter than other RF spektrum analysers currently available. The low-power consumption offers up to 9 hours of continuous operation from a charge which truly is a new record on portable analyzers. The SPECTRANs offer RF service engineers a highly portable and cost effective tool that enables to carry a spectrum analyser to areas that have usually been not cost effective when using existing «portable» products and difficult or even impossible to access with bench top instruments offered by other manufacturers. Our low cost and ultra portable spectrum analyser ensure that site survey and RF testing can be performed on any site visit. The SPECTRAN V3 series weighs less than 420gr and measures only 250 x 86 x 27 mm. The low-weight and small dimensions make it a true handheld instrument, unlike other «portable» spectrum analysers which can be up to ten times the size and weight. All SPECTRAN units offer a USB interface with real-time remote control to your PC or MAC. The free analyzer software, which is available for MAC OS, Linux and Windows, transforms any SPECTRAN in a powerful measurement solution with great features (e.g. recording, multiple window display, histogram, waterfall diagram, unlimited number of markers, enhanced limits display etc.) The shipment of this SPECTRAN includes a free EMC directional antenna which covers a wide frequency range.

Frequency range : 700MHz - 2500MHz

Electromagnetic field measurement: -80dB/m à 0dB/m.

Pass band : 1MHz to 50MHz. Sampling : 100ms.

Audio: AM demodulator with speaker and jack 2,5mm.

Flash memory: not compatible.

SMA input for antenna: 50 ohms.

Accuracy: +/- 4db.

Units measurement : dBm, dBμV, V/m, A/m, W/m2.

SPECTRAN-HF-4040 (Version 3)

Electromagnetic fields analyzers High Frequency 100MHz - 4000MHz

Introduction :

Same functionality as the previous analyzer but with better frequency range and better electromagnetic field. Include DECT phone analyzer. It is equally possible to make measurement on AM&FM radio emitter, television emitter, military radar, Tetra, Wifi-max, etc. It permits to record during a long time in place (data logger) thanks to it 64Kb flash memory, (extension memory up to 1Mb with option-180).

Frequency range: 100MHz - 4000MHz

Electromagnetic field measurement: -135dB/m to +10dB/m.

Pass band: 100KHz to 50MHz. Sampling: 100ms.

Audio: AM/FM demodulator with speaker and jack 2,5mm.

Flash memory: 64Kb.

SMA input for antenna: 50 ohms.

Accuracy: +/- 3db.

Units measurement : dBm, dBμV, V/m, A/m, W/m2.

SPECTRAN-HF-6065 & SPECTRAN-HF-6085 (Version 4)

Electromagnetic fields analyzers High Frequency 10MHz - 6000 or 8000MHz

Introduction :

Same functionality as the previous analyzer but with better frequency range and better electromagnetic field.

Frequency range: 10MHz - 6000MHz, (10MHz - 8000MHz for HF-6085).

Electromagnetic field measurement: -135dB/m to +10dB/m, (-145dB/m to +10dB/m for HF-6085).

Pass band: 10KHz to 50MHz, (3KHz to 50MHz for HF-6085). Sampling: 10ms.

Audio: AM/FM demodulator with speaker and jack 2,5mm.

Flash memory: 64Kb.

SMA input for antenna: 50 ohms.

Accuracy: +/- 2db.

Units measurement : dBm, dBμV, V/m, A/m, W/m2.

SPECTRAN-HF-60105 (Version 4)

Electromagnetic fields analyzers High Frequency 1MHz - 9400MHz

Introduction :

Same functionality as the previous analyzer but with better frequency range and better electromagnetic field.

Frequency range: 1MHz - 9400MHz.

Electromagnetic field measurement: -155db/m to +40db/m.

Pass band: 200Hz to 50MHz. Sampling: 5ms.

Audio: AM/FM/PM/GSM demodulator with speaker and jack 2,5mm.

Flash memory: 64Kb.

SMA input for antenna: 50 ohms.

Accuracy: +/- 1db.

Units measurement : dBm, dBμV, V/m, A/m, W/m2.

Item includes for SPECTRAN-HF serie :

Spectrum analyzer.

1300mA/h battery with battery charger and power supply.

Hyperlog antenna + with pistol grip with mini tripod function.

1 meter SMA cable + SMA adapter.

USB cable.

Software on CD-ROM.

User manual on CD-ROM.

Aluminium carrying case.

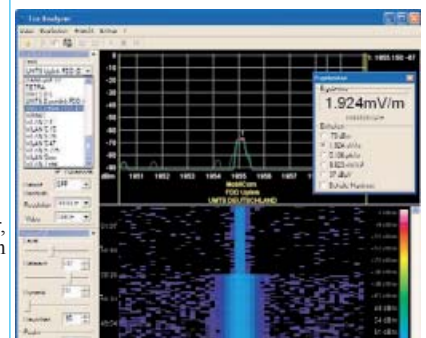
Options available for SPECTRAN-HF serie :

OPTION-254 : Lithium battery replacement 7,2V/3000mAh.

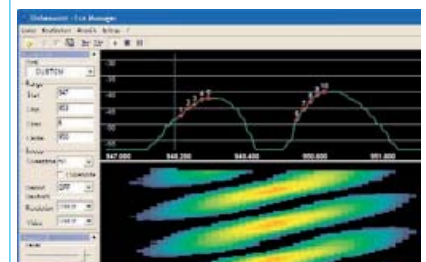
OPTION-290 : Carrying case in rubber for analyzers.



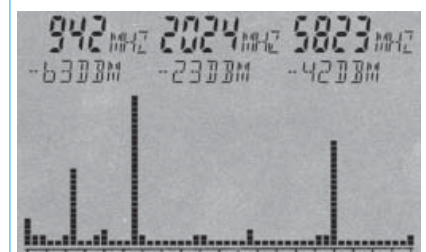
Hyperlog antenna



Analyzer software



Analyzer software



Bargraph (LCD display)



Range SPECTRAN-HF

Electrosmogs multi-field strenght meter and radiations meter

MULTIFIELD

Electrosmog multi-field EMF strenght meter Low Frequency 50Hz to 60Hz and High Frequency 50MHz to 3500MHz

Introduction:

The MultiField electrosmog meter is a device for quick measurements in a same time of 3 frequency meters:

- Magnetic field low frequency (50 to 60Hz) with sensor triple axis X,Y,Z, in mGauss or μ Tesla with a range of 0,2 to 2000mG.
- Electric field low frequency (50 to 60Hz) in V/m with a range of 1V/m to 2000V/m.
- Electromagnetic field high frequency (50 to 3500MHz) in W/m², μ W/cm², mA/m, dBm, V/m with a range of 0,03V/m to 14V/m.

It has LF bandwidth of 50Hz to 60Hz for measurement of power supply, power lines and cables, various home appliances. It has RF bandwidth of 50MHz to 3500MHz for measurement of Wifi, cellular phone 2G/3G/4G, DECT phone, radio/television emitters, microwaves ovens, bluetooth, etc... Measurements are display on a graphic TFT color monitor with data hold functions, low battery indicator, tone alarm, RF electromagnetic historical records (20 measurements), LF magnetic individual and aggregated X,Y,Z axial reading, 3 bargraphs to see quickly the power of each measurement of radiations, (green, yellow, red). It is an excellent device, high sensitivity, for living environments.

Product contents:

- A tester.
- A carrying case.
- 3 alkalines batteries 1,5V type AAA (LR03).
- A user manual in English and French.



MULTIFIELD

TM-191

Electrosmog Magnetic field EMF/ELF strenght meter Low Frequency from 30Hz to 300Hz

Introduction:

The TM-191 is applied to measuring electromagnetic fields of extremely low frequency (ELF) of 30Hz to 300Hz. The measurement can be displayed in MGauss or μ Tesla with a range of 0,1 to 2000mG or 0,01 μ T to 200 μ T. It is capable of measuring the magnetic field radiation intensity that is produced from various home appliances like power line, air conditioner, refrigerator, micro wave oven, computer monitor, audio/video devices, wall transformers, electric transmission equipment, etc... Measurements are displayed on a LCD monitor with a data hold function, a max function, a low battery indicator, overload. It is an excellent device, high sensitivity, for living environments or industrial environments.

Product contents:

- A tester.
- A carrying case.
- A battery 9V type 6F22.
- A user manual in English and French.



TM-191

TM-195

Electrosmog Electromagnetic field RF strenght meter High Frequency from 50MHz to 3500MHz with triple axis sensors

Introduction:

The TM-195 electrosmog power meter is designed for measuring and monitoring High Frequency and Radio Frequency RF. It is capable of measuring the frequency range of 50MHz to 3500MHz with triple axis X,Y,Z Isotropic sensors. The measurement can be displayed in W/m², μ W/cm², mA/m or V/m with a range of 38mV/m to 20V/m. It is ideal for measurement of Wifi, bluetooth, cellular phone 2G/3G/4G, DECT phone, base station antenna, radio/television emitters, microwaves ovens, spy camera, micro-emitter, personal living environment EMF safety, etc... Measurements are displayed on a LCD monitor for instantaneous measured value, maximum value or average value, with data hold and alarm functions. It is equally possible to records until 200 measurements.

Product contents:

- A tester.
- A carrying case.
- A battery 9V type 6F22.
- A user manual in English and French.



TM-195

TM-91

Radiation monitor Beta, Gamma, X-Ray

Introduction:

The TM-91 radiation monitor is the survey meter in measuring the Gamma, Beta, X-Ray radiation with Geiger-Mueller tube. It is useful in monitoring the environment home safety, nuclear, medical, mining and metal industries. It is also ideal for the border control, customs and goods inspections. Measurements are displayed on a LCD monitor with low and alarm settings. The measurement can be displayed in μ Siever/h or μ Rem/h with a range of 0,01 μ S/h to 20 μ S/h or 1 μ Rem/h to 2000 μ Rem/h. It is an excellent device, high sensitivity, for living environments or industrial environments.

Product content:

- A tester.
- A carrying case.
- A battery 9V type 6F22.
- A user manual.



TM-91

FIBER-CHEKER-PRO

Laser light emitter to test opticals fibers

Introduction :

The FIBER-CHEKER-PRO presented in pen form sends a visible red laser light through optic cables. It is used for checking the defects of a fiber cable. It sends a visible 650nm wave length red laser light through a fiber optic cable, the breaks or faults in the fiber will refract the light, creating a bright glow around the faulty area. The universal connector can be used for the most common fiber interfaces such as ST/SC/FC/FDDA. It is suitable to test both single-mode and multi-mode cables. With an optional 2.5mm to 1.25mm adapter, users can even test for 1.25mm fiber cables. The visibility is up to 5 kilometers in the fiber. There is also specially designed power circuit included; it provides steady power which avoids unstable laser output when the battery is low. The output signal can be switched between CW or Pulse mode (3Hz) to get different visual effects. There is a dust proof cover which will prevent dust from getting into the inside of the interface. The cover also helps avoid incidental exposure of the laser to your eye. Need 2 alkaline batteries 1,5V type AAA (LR03).

Item includes :

Emitter.
A protective carrying case.
User manual in English and French.



FIBER-CHEKER-PRO

OPTISOURCE-MULTI & OPTISOURCE-MONO

Optic light source multimode 850nm and 1300nm with FC connector

Optic light source monomode 1310nm and 1550nm with FC connector

Introduction :

The OPTISource, with FC connector, is a high performance stabilized source that is widely used in fiber network installation and maintenance. New version of OPTISource can provide the single wavelength output according to specific requirements including 850nm and 1300nm wavelength for the multi-mode. With an optional built in fiber connectors (FC, SC, ST) and power meters (SMARTFiber and SMARTFiber Pro), this choice brings you an economic and efficient solution for the fiber optic network tasks. Need 4 alkalines batteries 1,5V type AAA LR03 (not included).

Features :

Output power multimode : > -13dBm.
Output power monomode : > -5dBm.
Spectral width : < 5nm
Stability multimode : +/-0,25dB/8heures
Stability monomode : +/-0,15dB/8heures
Connector : type FC (Optional built in fiber connectors (FC or SC or ST assignable).
Auto power off 30mn without key pressed.
There are three output modes for each wavelength: CW/MOD/AUTO-IDENTIFY
CW and 270Hz, 1kHz, 2kHz modulated signals.
Auto-identify wavelength indicator (Full compatibility with SmartFiber and SmartFiberPro).

Item includes :

- Emitter.
- A protective carrying case.
- User manual.



OPTISOURCE-xxx

SMARTFIBER

Power meter for optic fibers monomode and multimode

Présentation :

SMARTFIBER with four wavelengths 850nm, 1300nm, 1310nm, 1550nm, is an easy to use and lightweight fiber optic power meter that measures the power of light transmitting from an optical fiber. It includes interchangeable adaptor to connect FC, ST and SC type fiber connectors. It utilizes an InGaAs detector to improve sensitivity and temperature stability to test standard optical power from +3 to -60dBm dynamic range. It can test both single-mode and multi-mode fiber cables, with the optional adaptor, users can test 2.5mm and 1.25mm fiber cables. For identification purposes, the SMARTFIBER can also receive modulate signals (270Hz, 1kHz, 2kHz) simultaneously. For fast and easy operation in testing the corresponding wavelengths, we recommend the OPTISOURCE as a complete set in auto-identifying wavelength of optical power source.

SMARTFIBER-PRO

Power meter for optic fibers mono and multimode with records mode

Présentation :

SMARTFIBER-PRO has the same characteristics as SMARTFIBER but it also has the capacity to record up to 1000 test datas that is up-loadable to a PC via USB connection for easy and convenient report purposes. includes a software test report. Supports also 1300nm and 1625nm wavelengths.

Contenu :

Receptor power meter.
3 connectors type FC/ST/SC.
A protective carrying case.
User manual in English.



SMARTFIBER

ADAPTORS FOR OPTISOURCES

OPTICASE : Carrying case in aluminium for 2 OPTISOURCES + 1 SMARTFIBER/-PRO

FA-002 : Optical fiber adapter converter for LC connector 2,5mm to 1,25mm

FA-1201 : Adapter FC male to LC female, monomode 9/125µm

FA-1202 : Adapter FC male to LC female, multimode 62,5/125µm

FA-1301 : Adapter FC male to SC female, monomode 9/125µm

FA-1302 : Adapter FC male to SC female, multimode 62,5/125µm

FA-1401 : Adapter FC male to ST female, monomode 9/125µm

FA-1402 : Adapter FC male to ST female, multimode 62,5/125µm



SMARTFIBER-PRO

LANTEST

RJ45 network cable tester with LED display + connectors

Introduction :

The cable tester LANTEST allows wire-mapping and cable testing with RJ11, RJ45 and BNC connectors by comparing the transmitting end and the receiving end with the LEDs. It is the most simple and economical proposed model. It is equipped with two LED bargraphs (8 LEDs for transmitting and 8 LEDs for receiving) allowing to detect cabling faults such as discontinuity, open and short wires, crossed pairs and miswiring. Two more LEDs permit you to verify the cable's shield and any eventual chassis grounding of one of the wires. The test can be made manually by pressing on the «push-button» to test the wires one after another in order to identify the type of wiring. The test can also be done by scanning automatically to verify if the wiring is correct. The reception of the signals emitted by the transmitter can be done either by the main unit itself to test short length cables, or by the supplied remote unit to test cables installed in buildings and with a maximal length of 200 m.

Item includes :

A master box (equipped with 2 shielded RJ45).
A remote box (equipped with 1 shielded RJ45).
A RJ45 modular cable.
Two RJ45/BNC adapter cables.
A BNC M/M adapter.
A protective carrying case.
User manual in English and French.



LANTEST

LANTEST-PRO

RJ45 network cable tester with tone generator and cable tracer

Introduction :

The cable tester LANTEST PRO enables the user to verify installed RJ45 connector based cables thanks to the use of a transmitting end and a receiving end. By pressing the "Test button", the LANTEST PRO directly displays with 4 green LEDs on the master unit if the pairs 1-2, 3-6, 4-5 and 7-8 are properly installed. If one of the pairs is not correctly installed, four red LEDs allow to detect cabling faults such as discontinuity, open and short wires, crossed pairs and miswiring. Two supplementary LEDs allow you to verify the shield's integrity as well as any eventual chassis grounding of one of the wires. The LANTEST PRO permits testing of cables with a length of 0.4 to 200 meters. The LANTEST PRO also allows you to generate a tone in the cable. With the optional cable-tracer, it is possible to trace in-wall cables.

The CABLE-TRACER is a line tracer (detector), that is a unit equipped with a mini antenna which permits to trace a tone emitted by the LANTEST-PRO, this allowing the user to find a wire lost in the wall or to detect where a wire is open.

Item includes :

A master box (equipped with 1 shielded RJ45).
A remote box (equipped with 1 shielded RJ45).
A cable tracer. A carrying case. User manual in English and French.



LANTEST-PRO

NETEST

RJ45 network cable tester with 4 remotes

Introduction :

The New Digital WiFi Detector can work to detect existed wireless APs and express the signal level with beep sound, and also provides the user with a clear description of each wireless access point on a site, including SSID, Chanel, Security and Signal Strength. With varied of the detecting function, it can help user connecting to IEEE 802.11 b/g devices, and prevent conflicts of Internet access over wireless points. It is truly an excellent tool for both installers and owners of wireless networks.

Item includes :

A master box (equipped with RJ45 and BNC connectors).
4 remotes box (equipped with RJ45 and BNC connectors).
An adapter RJ45 female - RJ45 female.
An adapter BNC male - BNC male.
An RJ45 male - RJ45 male adapter cable.
An BNC male - BNC male adapter cable.
A protective carrying case.
User manual in English.



NETEST

NET-RITE

Mini-cable tester RJ45 with LCD display

Introduction :

The Net-Rite cable tester is an economical, compact continuity and wiremap tester for Ethernet cable. The ergonomic handheld unit is easy to use with no buttons to push to initiate testing. The auto-on feature starts the test when a short or remote is detected. The removable onboard remote enables longer cable runs and enables testing up to 300 meters. Applications: Installation and troubleshooting on network cable, tests for continuity of Ethernet cable.

Tests Ethernet cable for opens, shorts, split pairs, miswires, and reversals.

Shows cable faults per TIA568 specifications.

Displays test results on full LCD, including PASS and FAIL.

Onboard remote stores in the bottom of the main unit.

Auto-on when short or remote sensed.

Auto-off when remote is disconnected.

Item includes :

A tester with its remote.
4 batteries 6.0V type LR44.
User manual in English and French.



NET-RITE

LANTEST-KIT

RJ45 network cable tester with LED display and buzzer

Introduction :

The cable tester LANTEST allows wire-mapping and cable testing with RJ11, RJ45 and BNC connectors by comparing the transmitting end and the receiving end with the LEDs. It is the most simple and economical proposed model. It is equipped with two LED bargraphs (8 LEDs for transmitting and 8 LEDs for receiving) allowing to detect cabling faults such as discontinuity, open and short wires, crossed pairs and miswiring. Two more LEDs permit you to verify the cable's shield and any eventual chassis grounding of one of the wires. The test can be made manually by pressing on the push-button to test the wires one after another in order to identify the type of wiring. The test can also be done by scanning automatically to verify if the wiring is correct. It is equipped by an alarm buzzer when a defective wire is detected. The reception of the signals emitted by the transmitter can be done either by the main unit itself to test short length cables, or by the supplied remote unit to test cables installed in buildings and with a maximal length of 200 m.

Item includes :

- A master box (equipped with 2 shielded RJ45).
- A remote box (equipped with 1 shielded RJ45).
- A RJ45 modular cable.
- Two RJ45/BNC adapter cables.
- A BNC M/M adapter.
- An alkaline battery 9V type 6F22.
- A protective carrying case. User manual in English and French.



LANTEST-KIT

TM-901N

RJ45 network cable tester with LCD display and cable length measurement

Introduction :

The cable tester TM-901N allows wire-mapping and cable testing with RJ45 connectors. It is provided with a main and remote unit to plug into each end of the cable. The test result is showing on the master box on the backlight LCD display. The LCD display show a graphic with each wires-pairs and the corresponding connexions at the other end of the cable. The test starts immediately by pushing the Test key. The result displays immediately. The integrated microcontroller provides an easy and automatic management to visualize the configuration and detects wiring errors for opens, shorts, miswires and split pairs on the twisted pair cabling on the LAN cable. This cable tester can measure length of each wire-pair from 0,10m (1ft) to 255m (836ft) and can display the result in meter or foot. Auto power off. The remote ID number is also displayed on the screen and it is possible to use until 8 remotes.

Item includes :

- A master box (equipped with 1 shielded RJ45).
- A remote box (equipped with 1 shielded RJ45).
- A RJ45 modular cable.
- An alkaline battery 9V type 6F22.
- A protective carrying case. User manual in English and French.



TM-901N

TM-903

Multimedia cable tester RJ45 LAN / RJ11 voice cable / Video coaxial with LCD display and cable length measurement

Item includes :

The cable tester TM-903 multimedia cable tester is a hand-held test instrument that lets you verify and troubleshoot the LAN cable UTP/STP of twisted pair (RJ45 connector), video coaxial cable (F-connector), and voice cable (RJ11 connector). It is provided with a main and remote unit to plug into each end of the cable. The test result is showing on the master box backlight LCD display. The LCD display show a graphic with each wires-pairs and the corresponding connexions at the other end of the cable. The test starts immediately by pushing the Test key. The result displays immediately. The integrated microcontroller provides an easy and automatic management to visualize the configuration and detects wiring errors for opens, shorts, miswires and split pairs on the twisted pair cabling on the LAN cable. This cable tester can measure length of each wire-pair from 0,10m (1ft) to 255m (836ft) and can display the result in meter or foot. Auto power off include. The remote ID number is also displayed on the screen and it is possible to use until 8 remotes.

Item includes :

- A master box (equipped with 1 shielded RJ45).
- A remote box (equipped with 1 shielded RJ45).
- A RJ45 modular cable.
- 6 alkaline batteries 1,5V type AAA (LR03).
- A protective carrying case. User manual in English and French.



TM-903

TESTIFIER

Multimedia cable tester for Ethernet cable, videos, alarm, voice cable coaxial cable, with RJ11/RJ12/RJ45/F/BNC connectors

Introduction :

The Testifier is the first identification and verification device exclusively designed for wire installations located in houses or buildings. TV/camera/telephone/audio/alarm/security cables, computer and home automation networks, can all be examined and located using this tester. It verifies shielded and unshielded cables categories 3 / 4 / 5 / 5E / 6 and coax. Multiple connectors and adapters supplied with the device permit to examine different types of plugs. The testifier is provided with a large screen to display clear information about all the eventual errors for different types of cables. It gives information about the line tensions and displays a "Pass" or "Fail" message after each test. It is also equipped with a tone generator which can trace in-wall cables. A remote is supplied with the tester to allow verification of telephone, coax and network plugs. Require 1 battery 9V type 6F22.

Item includes :

- TP350: Testifier.
- TP309: 1 replacement remote.
- TP20: 7.5# cable assembly, no-fault RJ12 connectors for RJ45.
- TP40: 12# cable assembly, RJ45 to alligator clip set.
- TP65: 1 coax remote identifier.
- User manual in English and French.



TESTIFIER

Tones and probes to find a cable

TRACE-RITE

Mini-tone generator + tone tracer for cables detection

Introduction :

The TRACE-RITE is an ergonomic, powerful, and accurate tracer with highly sensitive signal reading capabilities for locating telco, network, and coax cable. With a built-in tone generator, two different tones, and auto-off feature, the Trace-Rite is a reliable, easy-to-use tool that allows installers to easily find wires behind walls, floors, and ceilings. Traces all types of cable, including telco, network, and coax. Finds cables behind walls and ceilings. Identifies cabling without damaging insulation.

Item includes :

TT250 : TRACE-RITE + Remote
TG10 : cable RJ11 male - alligators clips.
8 batteries 1,5V type LR44.
User manual in English and French.



TONE-TRACER

TELLALL-INDICATOR

Identifier for telephone and data lines

Introduction :

The Tell-All-Indicator is a simple tool allowing to identify the wiring of telephone lines and data cables. It identifies 10-Base-T, Token ring (RJ11 / RJ12) and 100 Mbits systems (RJ45 to 4 pairs). It also indicates if the tensions of the line are alternating or continuous and detects polarity. It is equipped with 4 LEDs to identify data cable pairs and 2 LEDs to verify telephone lines. Delivered with a 6V alkaline battery.

Item includes :

TP100 : tester.
TP10 : RJ45 male to RJ11/RJ12 male connectors.
A battery 6V type 4LR44 - 4SR44 - 2CR1/3N.
User manual in English and French.



TELLALL-INDICATOR

SPEAKER-SEEKER

Alarm and telephone line identifier

Introduction :

The Speaker Seeker is a practical tool to identify wirepairs while installing an alarm, an interphone or other installations which require numerous wires. All there needs to be done is to connect the 20 numbered speaker remotes on one end of the line, then plug the TP400 Speaker Seeker on the other end of the line. The number of the matching connector will display. Requires a battery 9V type 6F22.

Item includes :

TP400 : Speaker-Seeker.
LB32 : F-connector to alligator clip.
TP315 : set of 20 numbered remotes with alligators clips.
User manual.



SPEAKER-SEEKER

TP315

Set of 20 numbered remotes with alligators clips

Introduction :

The TP315 contains 2 remotes numbered from 1 to 20 and equipped with alligators clips for an easy connexion on several cables. This set is compatible with SPEAKER-SEEKER, TESTIFIER and TESTIFIERPRO.

Item includes :

TP315 : set of 20 numbered remotes with alligators clips.



TP315

Electromagnetic fields - Isolations

ELITE3-10A & ELITE3-16A

EMC screened main cable shielded 3x1,5mm² or 3x2,5mm²

introduction :

50 meters EMC screened main cable shielded 3x1,5mm² or 3x2,5mm² color grey.

Avoid EMC and EMI problems caused by regular mains cables by using this screened mains cable which offers a high damping up to 30MHz. The high efficient EMC screened cables of the Elite2 series are usable for stationary installations in walls, floors etc.. They offer an optimal protection against alternating electric or magnetic field interferences up to 30MHz even when connected appliances are turned on. Please pay attention that the screens of all cables need to be connected serially or star-shaped and only one screen should be connected to PE or to the buildings separate grounding. Please avoid loops. When constructing new buildings (or renovating), all rooms should be equipped with these EMC cables, otherwise strong radiation from unscreened neighbouring rooms or ceilings/floors can occur. Please avoid at all to install anymore «normal» cables as subsequent replacement is virtually impossible and/or very expensive and complex

Features :

Shielding: Magnetic, electric & static fields

Frequency range: DC to 30MHz

Load: 16A/220V or 32A/110V

Voltage: 300/500V at 50/60Hz

Security class: 1

Screening material: Aluminum foil with auxiliary wire

Isolation material: Polyvinylchlorid

Color: Grey

Temperature range: Up to 70° Celsius

Diameter: 8,1mm

Cable data: 3x1,5mm² (blue, brown, yellow/green)

Sales package: 50m drum

Weight: approx. 150g/m²

Quality: ISO 9002, according to EN 60 320 / 2.2 standard

EMC screened mains cable for stationary installation (VDE-Reg.-No. 1156236)

100% static screening

Magnetic screening: Up to 80%



ELITE3



Roll ELITE3

Logics analysers

LA-2025

Stand alone logic analyzer & data logger up to 250MHz

Introduction :

The LA-2025 help minimize users' project risk by providing the most reliable, accurate data capture and a complete view of system behavior. These products are ideally suited for users on hardware/software debugging, parametric, mixed signal testing, and complex debugging. Moreover, their compact size and ability to connect with a PC for analysis and data logging makes them an ideal solution at remote sites. Operating system Windows 98/2000/XP/VISTA/Win7 (32 bits).

Features :

Timing analysis : 250 MHz

State analysis : 200 MHz

Bandwidth : 200 MHz

Channels : 32

RAM size : 2 Moctets

Storage depth per channel : 512 Kbits x 32

Trigger mode : Pattern / Edge / AND / OR

Trigger Pre/Post : Oui

Trigger level : 3 (Edge or Pattern)

Trigger continu : Oui

Trigger output : Oui

Bus analysis: Oui

Threshold range : -4V à +4V

Précision : +/- 50mV

Maximum input voltage : +/- 30V

Impedance : 100Kohms (shunt by 8pF)

Use temperature : 0°C à +45°C

Storage temperature : -40°C à +75°C

Data skew : 2ns typical

PC link interface : USB 2.0

Power supply : 90V à 230V AC

Weight : 3,8 Kg

Dimensions : 31 x 15 x 9 cm

Capture Glitch : Oui

Item includes :

1 logic analyzer.

4 data pod.

4 lead set with 8 wires each.

32 testing probes.

1 power cable.

1 software and manual on CD-ROM.

1 USB cable (type A-B).

1 User manual in French and English.



Logic analyser
LA-2025

Printed boards

PNP-BLUE

Lot of 5 sheets of paper transfert film without insolation

Introduction :

PnP Blue produces high quality prototype PCB resist layouts making your design ready to etch. PnP Blue is a Mylar (Polyester) backed material in which several layers of release agents and resist coatings are applied. An image is printed or photocopied onto this film, using a laser printer or photocopier (dry toner based), and subsequently ironed or pressed onto a cleaned copper clad board. The image area applied to the film is subsequently transferred to the copper board, along with the high quality resist (blue). The film is removed and resulting board is ready to etch in ferric chloride.

Item includes :

- 5 sheets of paper PNP-BLUE.

- User manual in English and French.



