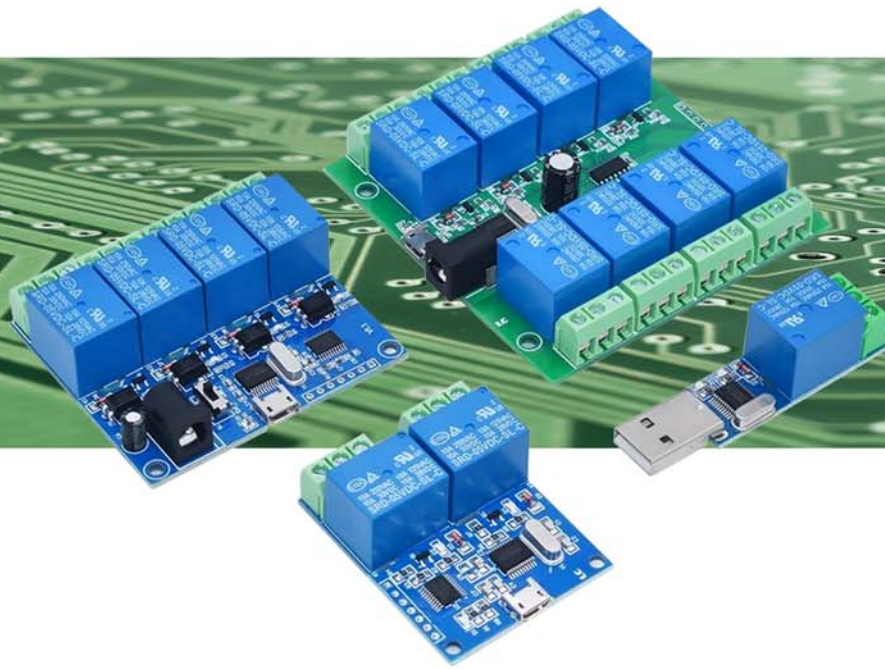


1 / 2 / 4 / 8 CHANNELS RELAYS MODULES BOARD WORKING ON USB PORT



USBM-RELAY01
USBM-RELAY02
USBM-RELAY04
USBM-RELAY08

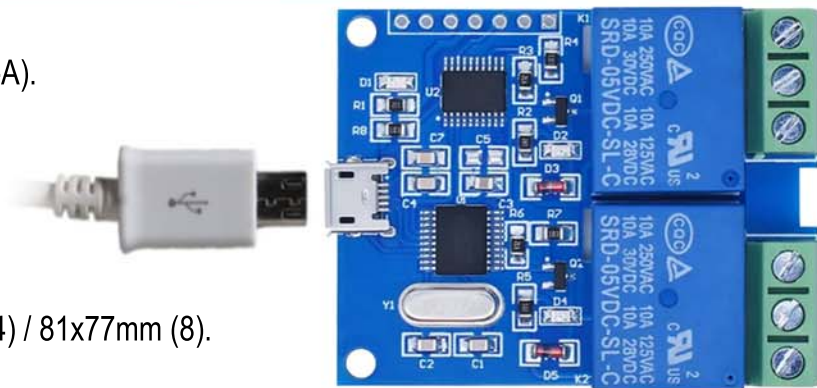


Introduction:

This 1/2/4/8 channels interface board can control various appliances, and others equipments thanks to its relays modules. The interface is controlled directly by a computer through the USB port thanks to standard USB-A to USB-Micro cable. The CH340 USB driver, witch work under Windows XP/VISTA/7/8/10/11 and Linux, as well as the manager software can be downloaded freely. Your own applications can be developed on basis of source code and functions written in C/C++ language. Those functions allow to manage the virtual serial port installed with the driver. This board is equipped with high current relays modules. They load 10A/250Vac max or 10A/30Vdc max.

Hardware & Electrical specifications:

Interface: Micro-USB port, (Except board 1 relay -> USB-A).
Power supply : 5Vdc/1A.
Power connector: jack (4 and 8 relays).
USB control chip : CH340.
Port speed: 9600 bds.
K1~K8 pins: contacts relays, (3 pins).
Relays output : 10A/125Vac or 10A/28Vdc.
Relays output max : 10A/250Vac or 10A/30Vdc.
Size product : 17x48mm (1) / 40x50mm (2) / 63x56mm (4) / 81x77mm (8).
Require an USB-A to Micro-USB standard cable.



How to use the relay board on a computer ?

After installing the driver you can use the manager software supplied with download. You can equally develop your own application thanks to the source code and functions supplied. The driver installs a virtual COM port on your computer. In this case, you can use standard COM port functions by following the next instructions (exemple):

- Select the COM port used and adjust the baud rate to 9600 bds.
- Send 0xA0 to activate the relay board.
- Send 0x01 to select the relay n°1.
- Send 0x00 or 0x01 to activate or deactivate the relay.
- Send checksum of the 3 previous codes sent: 0xA1 or 0xA2, to validate.

Item includes:

PCB relays board with 1, 2, 4 or 8 relays.
Download item includes :

- Relay board manager software.
- Driver CH340 for Windows and Linux.
- Sources codes and functions in C/C++ language.
- User manual in English and French.

Products informations : www.seeit.fr